



Tau (Phospho-Ser235) Antibody

Cat. #: ANTY011106

Species: Human, Mouse and Rat

Quantity: 100ug

Concentration: 100ug/100ul

Storage and Stability: Store at -20°C/1 year

Immunogen: The antiserum was produced against synthesized phosphopeptide derived from human Tau around the phosphorylation site of serine 235 (P-K-SP-P-S).

Specificity: Tau (phospho-Ser235) antibody detects endogenous levels of Tau only when phosphorylated at serine 235.

Tested Application: WB

Application Notes Rabbit IgG in phosphate buffered saline (without Mg²⁺ and Ca²⁺), pH 7.4, 150mM NaCl, 0.02% sodium azide and 50% glycerol.

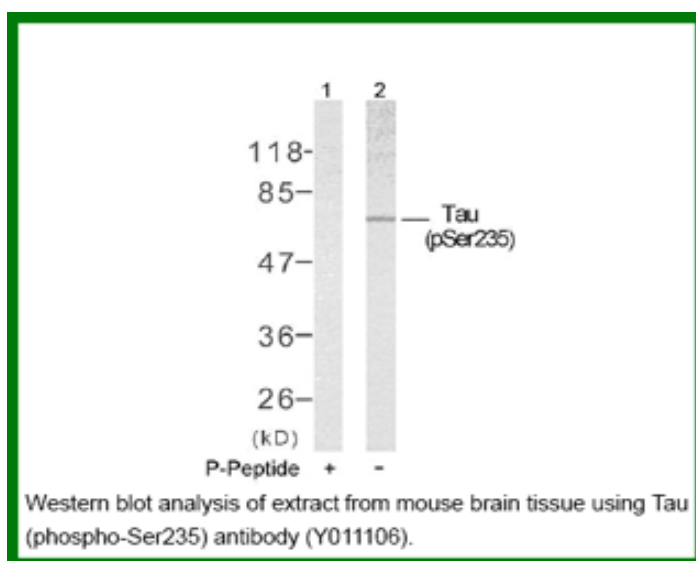
Raised In: Rabbit

Purity: The antibody was affinity-purified from rabbit antiserum by affinity-chromatography using epitope-specific phosphopeptide. The antibody against non-phosphopeptide was removed by chromatography using non-phosphopeptide corresponding to the phosphorylation site.

Storage buffer: WB: 1:500~1:1000

Form: Liquid

References : Alonso Adel C, et al. (2004) J Biol Chem. 279(33): 34873-34881. Liu F, et al. (2002) FEBS Lett. 530(1-3): 209-214. Sengupta A, et al. (1998) Arch Biochem Biophys. 357(2): 299-309. Kyriakis J M, et al. (1994) Nature. 369: 156-160.



For research use only

Antagene, Inc. Toll Free: 1-866-964-2589, Fax: 1-888-225-1868, info@antageneinc.com,
www.antageneinc.com