



## PLC $\gamma$ 1 (Phospho-Tyr783) Antibody

**Cat. #:** ANTY011103

**Species:** Human and Mouse

**Quantity:** 100ug

**Concentration:** 100ug/100ul

**Storage and Stability:** Store at -20°C/1 year

**Immunogen:** The antiserum was produced against synthesized phosphopeptide derived from human PLC $\gamma$ 1 around the phosphorylation site of tyrosine 783 (G-F-YP-V-E).

**Specificity:** PLC $\gamma$ 1 (phospho-Tyr783) antibody detects endogenous levels of PLC $\gamma$ 1 only when phosphorylated at tyrosine 783.

**Tested Application:** WB

**Application Notes:** Rabbit IgG in phosphate buffered saline (without Mg<sup>2+</sup> and Ca<sup>2+</sup>), pH 7.4, 150mM NaCl, 0.02% sodium azide and 50% glycerol.

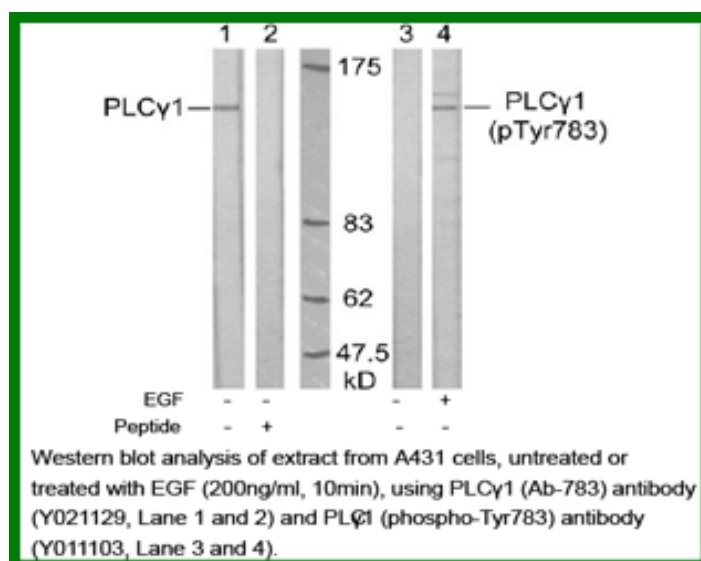
**Raised In:** Rabbit

**Purity:** The antibody was affinity-purified from rabbit antiserum by affinity-chromatography using epitope-specific phosphopeptide. The antibody against non-phosphopeptide was removed by chromatography using non-phosphopeptide corresponding to the phosphorylation site.

**Storage buffer:** WB: 1:500~1:1000

**Form:** Liquid

**References** DeBell KE, et al. Mol Cell Biol. 1999 Nov; 19(11): 7388-7398. Verí MC, et al. Mol Cell Biol. 2001 Oct; 21(20): 6939-6950. Sette C, et al. EMBO J. 2002 Oct 15; 21(20): 5386-5395.



**For research use only**

Antagene, Inc. Toll Free: 1-866-964-2589, Fax: 1-888-225-1868, [info@antageneinc.com](mailto:info@antageneinc.com),  
[www.antageneinc.com](http://www.antageneinc.com)