



## Caveolin-1 (Phospho-Tyr14) Antibody

**Cat#:** ANT-Y011090

**Species:** Human, Mouse and Rat

**Quantity:** 100ug

**Concentration:** 100ug/100ul

**Storage and Stability:** Store at -20°C/1 year

**Immunogen:** The antiserum was produced against synthesized phosphopeptide derived from human Caveolin-1 around the phosphorylation site of tyrosine 14 (H-L-YP-T-V).

**Specificity:** Caveolin-1 (phospho-Tyr14) antibody detects endogenous levels of Caveolin-1 only when phosphorylated at tyrosine 14.

**Tested application:** WB

**Application Notes:** Rabbit IgG in phosphate buffered saline (without Mg<sup>2+</sup> and Ca<sup>2+</sup>), pH 7.4, 150mM NaCl, 0.02% sodium azide and 50% glycerol.

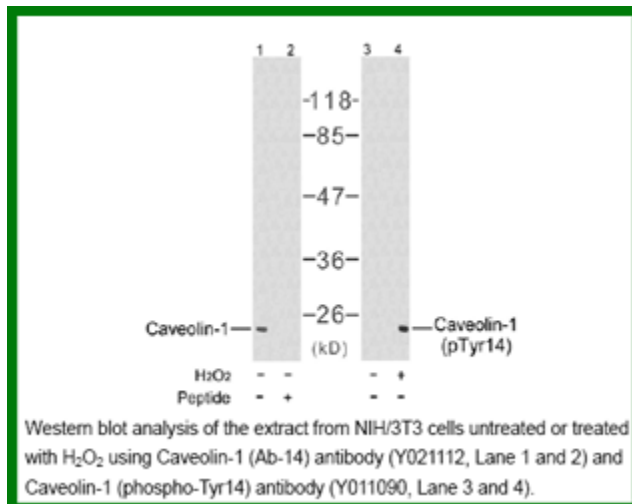
**Raised In:** Rabbit

**Purity:** The antibody was affinity-purified from rabbit antiserum by affinity-chromatography using epitope-specific phosphopeptide. The antibody against non-phosphopeptide was removed by chromatography using non-phosphopeptide corresponding to the phosphorylation site.

**Storage buffer:** WB: 1:500~1:1000

**Form:** Liquid

**References:** Zhang Y, et al. (2005) Mol Cell Proteomics. 4(9): 1240-1250. Labrecque L, et al. (2004) J Biol Chem. 279(50): 52132-52140. Fielding PE, et al. (2004) Biochemistry. 43(9): 2578-2586. Labrecque L, et al. (2003) Mol Biol Cell. 14(1): 334-347. Maggi D, et al. (2002) Biochem Biophys Res Commun. 295(5): 1085-1089.



**For research use only**

Antagene, Inc. Toll Free: 1-866-964-2589, Fax: 1-888-225-1868, [info@antageneinc.com](mailto:info@antageneinc.com),  
[www.antageneinc.com](http://www.antageneinc.com)