



Paxillin (Phospho-Tyr118) Antibody

Cat#: ANTY011089

Species: Human, Mouse and Rat

Quantity: 100ug

Concentration: 100ug/100ul

Storage and Stability: Store at -20°C/1 year

Immunogen: The antiserum was produced against synthesized phosphopeptide derived from human Paxillin around the phosphorylation site of tyrosine 118 (H-V-YP-S-F).

Specificity: Paxillin (phospho-Tyr118) antibody detects endogenous levels of Paxillin only when phosphorylated at tyrosine 118.

Tested application: WB

Application Notes: Rabbit IgG in phosphate buffered saline (without Mg²⁺ and Ca²⁺), pH 7.4, 150mM NaCl, 0.02% sodium azide and 50% glycerol.

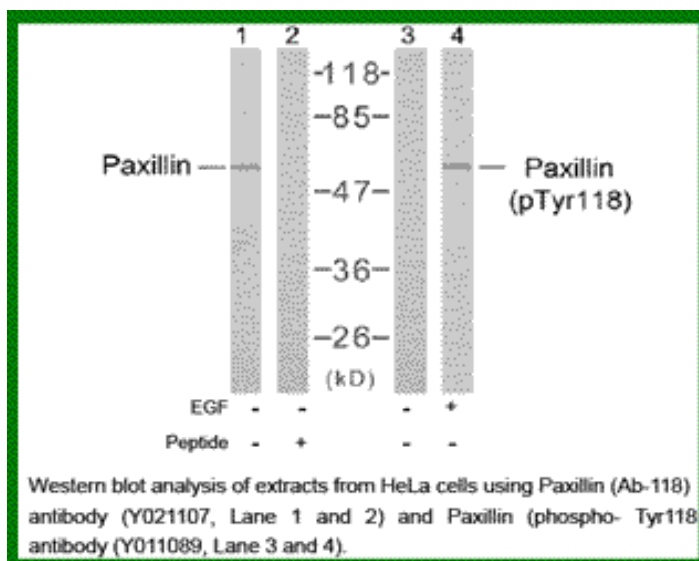
Raised In: Rabbit

Purity: The antibody was affinity-purified from rabbit antiserum by affinity-chromatography using epitope-specific phosphopeptide. The antibody against non-phosphopeptide was removed by chromatography using non-phosphopeptide corresponding to the phosphorylation site.

Storage buffer: WB: 1:500~1:1000

Form: Liquid

References: Tao WA, et al.(2005)Nat Methods.2(8): 591-598. Zhang Y, et al.(2005) Mol Cell Proteomics.4(9): 1240-1250. Sanders MA, et al.(2005)J Biol Chem.280(25): 23516-23522. Rush J, et al.(2004) Nat Biotechnol. 23(1): 94-101.



For research use only

Antagene, Inc. Toll Free: 1-866-964-2589, Fax: 1-888-225-1868, info@antageneinc.com,
www.antageneinc.com