



IGF-1R (Phospho-Tyr1165/Tyr1166) Antibody

Cat#: ANTY011088

Species: Human, Mouse and Rat

Quantity: 100ug

Concentration: 100ug/100ul

Storage and Stability: Store at -20°C/1 year

Immunogen: The antiserum was produced against synthesized phosphopeptide derived from human IGF-1R around the phosphorylation site of tyrosine 1165/tyrosine 1166 (T-D-YP-YP-R-K).

Specificity: IGF-1R (phospho-Tyr1165/Tyr1166) antibody detects endogenous levels of IGF-1R only when phosphorylated at tyrosine 1165/tyrosine1166.

Tested application: WB

Application Notes: Rabbit IgG in phosphate buffered saline (without Mg²⁺ and Ca²⁺), pH 7.4, 150mM NaCl, 0.02% sodium azide and 50% glycerol.

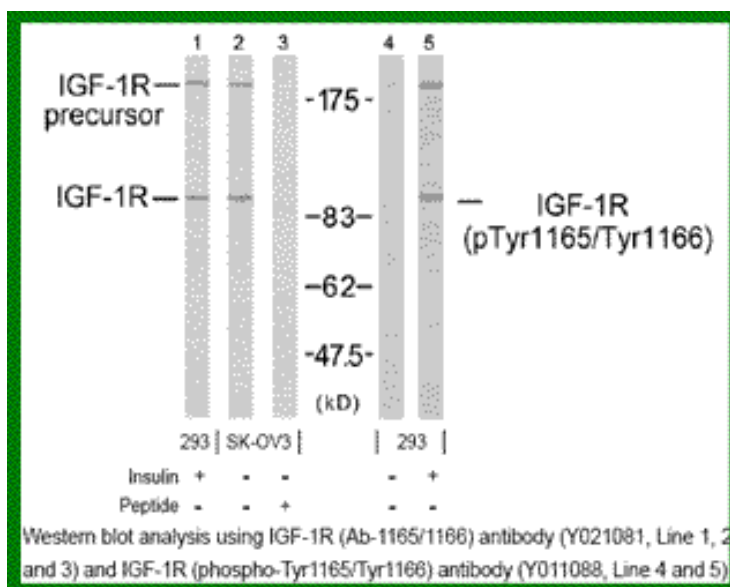
Raised In: Rabbit

Purity: The antibody was affinity-purified from rabbit antiserum by affinity-chromatography using epitope-specific phosphopeptide. The antibody against non-phosphopeptide was removed by chromatography using non-phosphopeptide corresponding to the phosphorylation site.

Storage buffer: WB: 1:500~1:1000

Form: Liquid

References: Li S, et al. (1994) J Biol Chem; 269(51): 32558-64.



For research use only

Antagene, Inc. Toll Free: 1-866-964-2589, Fax: 1-888-225-1868, info@antageneinc.com,
www.antageneinc.com