



VEGFR2 (Phospho-Tyr1175) Antibody

Cat. #: ANTY011084

Species: Human, Mouse and Rat

Quantity: 100ug

Concentration: 100ug/100ul

Storage and Stability: Store at -20°C/1 year

Immunogen: The antiserum was produced against synthesized phosphopeptide derived from human VEGFR2 around the phosphorylation site of tyrosine 1175 (K-D-YP-I-V).

Specificity: VEGFR2 (phospho-Tyr1175) antibody detects endogenous levels of VEGFR2 only when phosphorylated at tyrosine 1175.

Tested application: IHC

Application Notes: Rabbit IgG in phosphate buffered saline (without Mg²⁺ and Ca²⁺), pH 7.4, 150mM NaCl, 0.02% sodium azide and 50% glycerol.

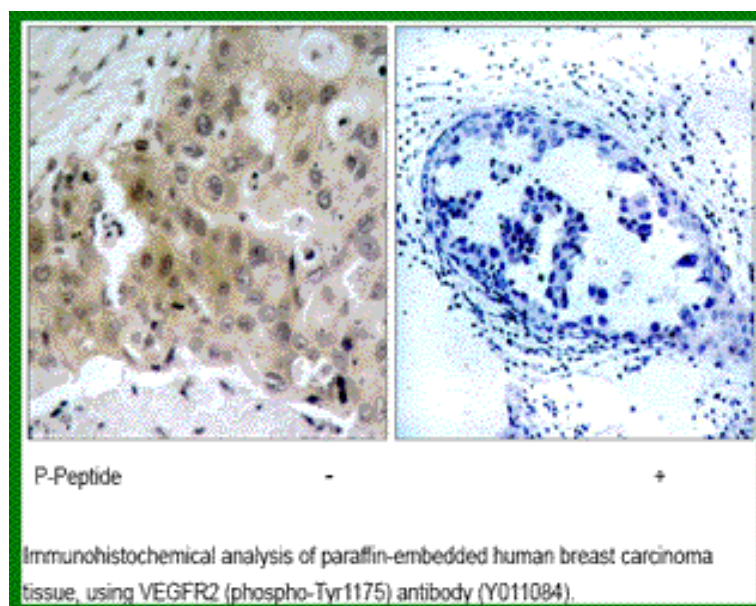
Raised In: Rabbit

Purity : The antibody was affinity-purified from rabbit antiserum by affinity-chromatography using epitope-specific phosphopeptide. The antibody against non-phosphopeptide was removed by chromatography using non-phosphopeptide corresponding to the phosphorylation site.

Storage buffer: IHC: 1:50~1:100

Form: Liquid

References: Lamalice L, et al. (2004). Oncogene.23(2): 434-445. Takahashi T, et al. (2001). EMBO J .20(11): 2768-2778.



For research use only

Antagene, Inc. Toll Free: 1-866-964-2589, Fax: 1-888-225-1868, info@antageneinc.com,
www.antageneinc.com