



EGFR (Phospho-Ser1070) Antibody

CAT# ANTY011080

Species: Human, Mouse and Rat

Quantity: 100ug

Concentration: 100ug/100ul

Storage and Stability: Store at -20°C/1 year

Immunogen: The antiserum was produced against synthesized phosphopeptide derived from human EGFR around the phosphorylation site of serine 1070 (R-Y-SP-S-D).

Specificity: EGFR (phospho-Ser1070) antibody detects endogenous levels of EGFR only when phosphorylated at serine1070.

Tested application: Western Blot and IHC

Application Notes: Rabbit IgG in phosphate buffered saline (without Mg²⁺ and Ca²⁺), pH 7.4, 150mM NaCl, 0.02% sodium azide and 50% glycerol.

Raised In: Rabbit

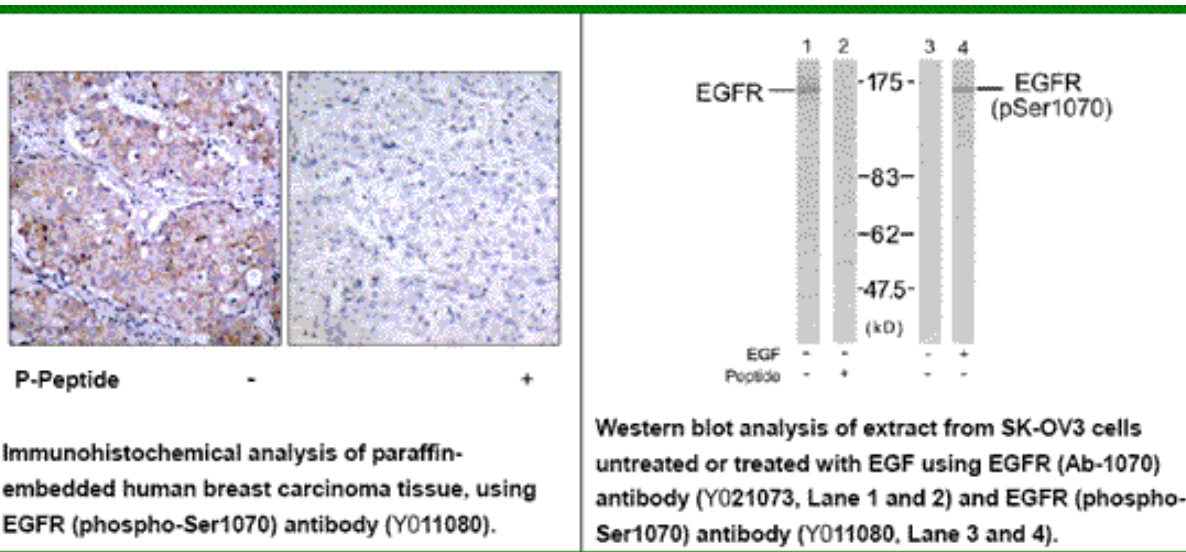
Purity: The antibody was affinity-purified from rabbit antiserum by affinity-chromatography using epitope-specific phosphopeptide. The antibody against non-phosphopeptide was removed by chromatography using non-phosphopeptide corresponding to the phosphorylation site.

Storage buffer: WB: 1:500~1:1000 IHC: 1:50~1:100

Form: Liquid

REFERENCES:

Feinmesser RL, et al. (1999) J Biol Chem; 274(23): 16168-73. Gamou S, et al. (1995) FEBS Lett; 357(2): 161-4. Gamou S, et al. (1994) J Cell Physiol; 158(1): 151-9. Heisermann GJ, et al. (1988) J Biol Chem; 263(26): 13152-8.



For research use only

Antagene, Inc. Toll Free: 1-866-964-2589, Fax: 1-888-225-1868, info@antageneinc.com,
www.antageneinc.com