



HER2 (Phospho-Tyr1248) Antibody

CAT# ANTY011079

Species: Human, Mouse and Rat

Quantity: 100ug

Concentration: 100ug/100ul

Storage and Stability: Store at -20°C/1 year

Immunogen: The antiserum was produced against synthesized phosphopeptide derived from human HER2 around the phosphorylation site of tyrosine1248 (P-E-YP-L-G).

Specificity: HER2 (phospho-Tyr1248) antibody detects endogenous levels of HER2 only when phosphorylated at tyrosine1248.

Tested application: WB and IHC

Application Notes: Rabbit IgG in phosphate buffered saline (without Mg²⁺ and Ca²⁺), pH 7.4, 150mM NaCl, 0.02% sodium azide and 50% glycerol.

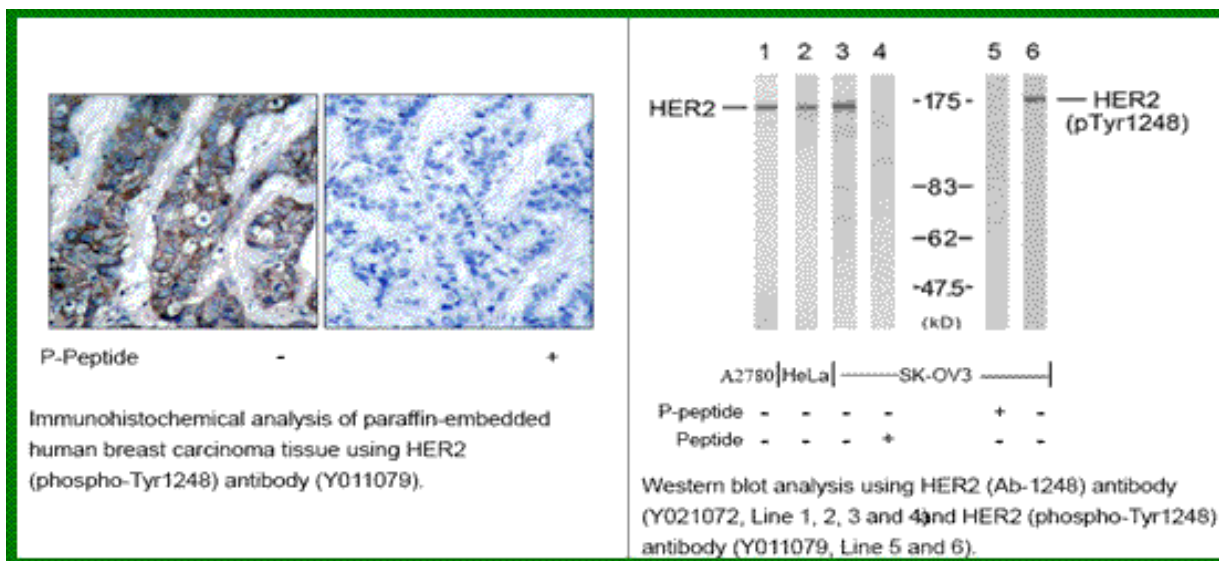
Raised In: Rabbit

Purity: The antibody was affinity-purified from rabbit antiserum by affinity-chromatography using epitope-specific phosphopeptide. The antibody against non-phosphopeptide was removed by chromatography using non-phosphopeptide corresponding to the phosphorylation site.

Storage buffer: WB: 1:500~1:1000 IHC: 1:50~1:100

Form: Liquid

REFERENCES: Ramsauer VP, et al. (2003) J Biol Chem; 278(32): 30142-7. Jepson S, et al. (2002) Oncogene; 21(49): 7524-32. Ren Z, et al. (2002) J Biol Chem; 277(41): 38486-93. Eppenberger-Castori S, et al. (2001) J Clin Oncol; 19(3): 645-56.



For research use only

Antagene, Inc. Toll Free: 1-866-964-2589, Fax: 1-888-225-1868, info@antageneinc.com,
www.antageneinc.com

For research use only

Antagene, Inc. Toll Free: 1-866-964-2589, Fax: 1-888-225-1868, info@antageneinc.com,
www.antageneinc.com