



PKD/PKC μ (Phospho-Ser738) Antibody

CAT# ANT011078

Species: Human, Mouse and Rat

Quantity: 100ug

Concentration: 100ug/100ul

Storage and Stability: Store at -20°C/1 year

Immunogen : The antiserum was produced against synthesized phosphopeptide derived from human PKD/PKC μ around the phosphorylation site of serine 738 (E-K-SP-F-R).

Specificity : PKD/PKC μ (phospho-Ser738) antibody detects endogenous levels of PKD/PKC μ only when phosphorylated at serine 738.

Tested application: WB

Application Notes : Rabbit IgG in phosphate buffered saline (without Mg²⁺ and Ca²⁺), pH 7.4, 150mM NaCl, 0.02% sodium azide and 50% glycerol.

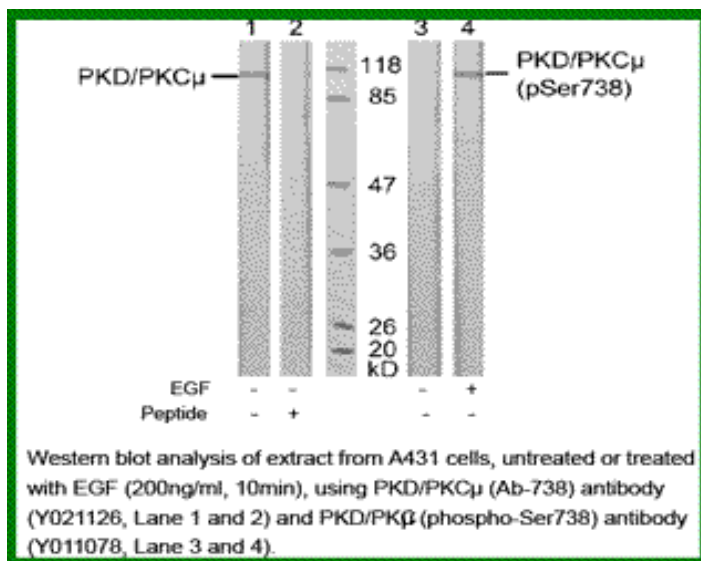
Raised In: Rabbit

Purity : The antibody was affinity-purified from rabbit antiserum by affinity-chromatography using epitope-specific phosphopeptide. The antibody against non-phosphopeptide was removed by chromatography using non-phosphopeptide corresponding to the phosphorylation site.

Storage buffer: WB: 1:500~1:1000

Form: Liquid

REFERENCES : Storz P, et al. Mol Cell Biol. 2004 Apr; 24(7): 2614-2626. Storz P, et al. Mol Cell Biol. 2005 Oct; 25(19): 8520-8530. Zhang W, et al. J Biol Chem 2005 May 13; 280(19): 19036-19044



For research use only

Antagene, Inc. Toll Free: 1-866-964-2589, Fax: 1-888-225-1868, info@antageneinc.com,
www.antageneinc.com