



MyoD (Phospho-Ser200) Antibody

CAT# ANT011077

Species: Human, Mouse and Rat

Quantity: 100ug

Concentration: 100ug/100ul

Storage and Stability: Store at -20°C/1 year

Immunogen: The antiserum was produced against synthesized phosphopeptide derived from human MyoD around the phosphorylation site of serine 200 (A-S-SP-P-R).

Specificity: MyoD (phospho-Ser200) antibody detects endogenous levels of MyoD only when phosphorylated at serine 200.

Tested application: WB

Application Notes : Rabbit IgG in phosphate buffered saline (without Mg²⁺ and Ca²⁺), pH 7.4, 150mM NaCl, 0.02% sodium azide and 50% glycerol.

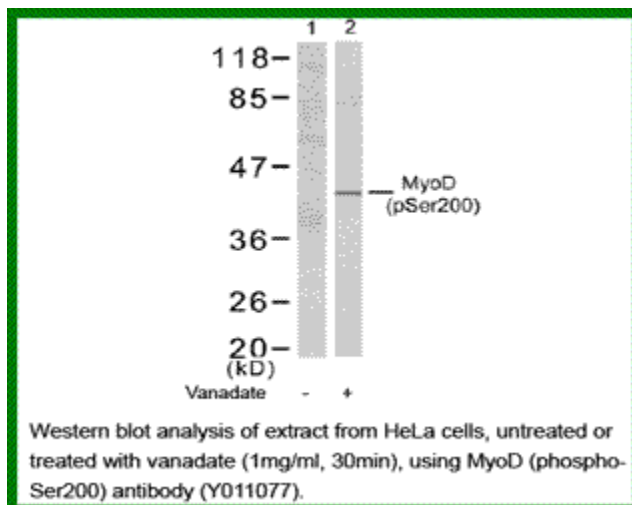
Raised In: Rabbit

Purity: The antibody was affinity-purified from rabbit antiserum by affinity-chromatography using epitope-specific phosphopeptide. The antibody against non-phosphopeptide was removed by chromatography using non-phosphopeptide corresponding to the phosphorylation site.

Storage buffer: WB: 1:500~1:1000

Form: Liquid

REFERENCES: Emmanuel G, et al. J. Biol. Chem., Jun 2000; 275: 18767 - 18776 Tintignac LA, et al. Mol Cell Biol. 2004 Feb; 24(4): 1809-1821. Kitzmann M, et al. Mol Cell Biol. 1999 Apr; 19(4): 3167-3176.



For research use only

Antagene, Inc. Toll Free: 1-866-964-2589, Fax: 1-888-225-1868, info@antageneinc.com,
www.antageneinc.com