



HER2 (Phospho-Tyr877) Antibody

CAT# ANT011075

Species: Human, Mouse and Rat

Quantity: 100ug

Concentration: 100ug/100ul

Storage and Stability: Store at -20°C/1 year

Immunogen : The antiserum was produced against synthesized phosphopeptide derived from human HER2 around the phosphorylation site of tyrosine 877 (T-E-YP-H-A).

Specificity :

HER2 (phospho-Tyr877) antibody detects endogenous levels of HER2 only when phosphorylated at tyrosine 877.

Tested application: WB and IHC

Application Notes : Rabbit IgG in phosphate buffered saline (without Mg²⁺ and Ca²⁺), pH 7.4, 150mM NaCl, 0.02% sodium azide and 50% glycerol.

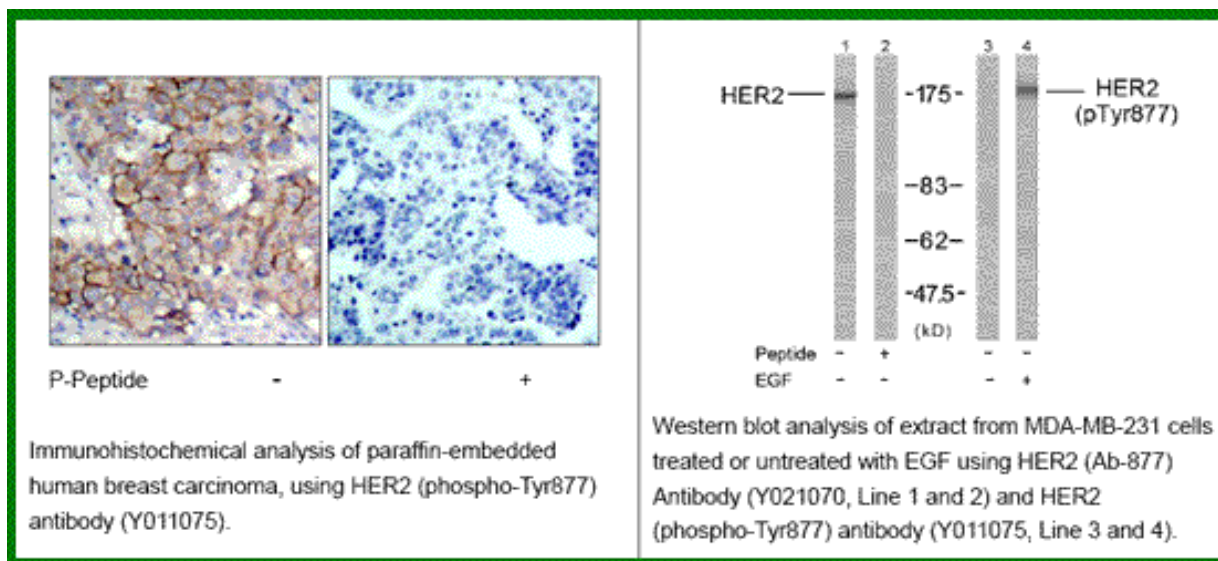
Raised In: Rabbit

Purity : The antibody was affinity-purified from rabbit antiserum by affinity-chromatography using epitope-specific phosphopeptide. The antibody against non-phosphopeptide was removed by chromatography using non-phosphopeptide corresponding to the phosphorylation site.

Storage buffer: WB: 1:500~1:1000 IHC: 1:50~1:100

Form: Liquid

REFERENCES: Dittadi, R. et al. (2000) J. Natl. Cancer Inst. 92, 1443-1444. Muthuswamy, S. K. et al. (1999) Mol. Cell. Biol. 19, 6845-6857. Qian, X. et al. (1994) Proc. Natl. Acad. Sci. USA 91, 1500-1504.



For research use only

Antagene, Inc. Toll Free: 1-866-964-2589, Fax: 1-888-225-1868, info@antageneinc.com,
www.antageneinc.com