



## Estrogen Receptor- $\alpha$ (Phospho-Ser118) Antibody

**CAT#** ANTY011072

**Species:** Human and Mouse

**Quantity:** 100ug

**Concentration:** 100ug/100ul

**Storage and Stability:** Store at -20°C/1 year

**Immunogen:** The antiserum was produced against synthesized phosphopeptide derived from human Estrogen Receptor- $\alpha$  around the phosphorylation site of serine 118 (Q-L-SP-P-F).

**Specificity:** Estrogen Receptor- $\alpha$  (phospho-Ser118) antibody detects endogenous levels of Estrogen Receptor- $\alpha$  only when phosphorylated at serine 118.

**Tested application:** Western Blot and IHC

**Application Notes :** Rabbit IgG in phosphate buffered saline (without Mg<sup>2+</sup> and Ca<sup>2+</sup>), pH 7.4, 150mM NaCl, 0.02% sodium azide and 50% glycerol.

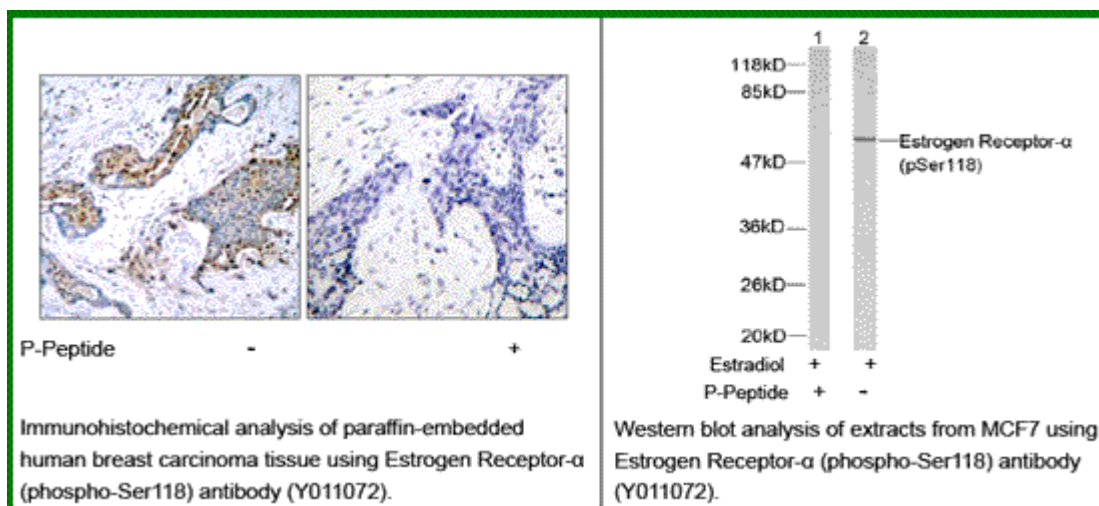
**Raised In:** Rabbit

**Purity:** The antibody was affinity-purified from rabbit antiserum by affinity-chromatography using epitope-specific phosphopeptide. The antibody against non-phosphopeptide was removed by chromatography using non-phosphopeptide corresponding to the phosphorylation site.

**Storage buffer:** WB: 1:500~1:1000 IHC: 1:50~1:100

**Form:** Liquid

**REFERENCES:** Medunjanin S, et al. (2005). J Biol Chem.80 (38):33006-33014. Masuhiro Y, et al. (2005). Proc Natl Acad Sci U S A.102 (23): 8126-8131. Pentecost BT, et al. (2005). Mol Cell Endocrinol.238 (1-2): 9-25. Park KJ, et al. (2005). Mol Cell.18 (1): 71-82.



**For research use only**

Antagene, Inc. Toll Free: 1-866-964-2589, Fax: 1-888-225-1868, [info@antageneinc.com](mailto:info@antageneinc.com),  
[www.antageneinc.com](http://www.antageneinc.com)