



Estrogen Receptor- α (Phospho-Ser106) Antibody

Cat. # ANTY011071

Species: Human and Mouse

Quantity: 100ug

Concentration: 100ug/100ul

Storage and Stability: Store at -20°C/1 year

Immunogen: The antiserum was produced against synthesized phosphopeptide derived from human Estrogen Receptor- α around the phosphorylation site of serine106 (S-P- SP-P-L).

Specificity: Estrogen Receptor- α (phospho-Ser106) antibody detects endogenous levels of Estrogen Receptor- α only when phosphorylated at serine 106.

Tested application: Western Blot and IHC

Application Notes: Rabbit Rabbit IgG in phosphate buffered saline (without Mg²⁺ and Ca²⁺), pH 7.4, 150mM NaCl, 0.02% sodium azide and 50% glycerol.

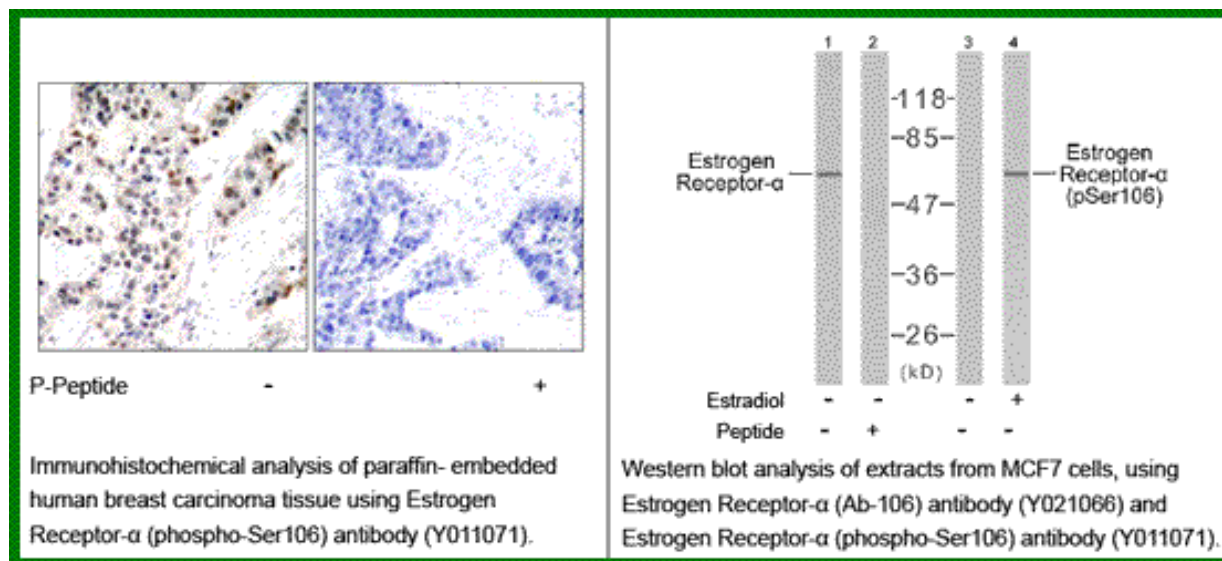
Raised In: Rabbit

Purity: The antibody was affinity-purified from rabbit antiserum by affinity-chromatography using epitope-specific phosphopeptide. The antibody against non-phosphopeptide was removed by chromatography using non-phosphopeptide corresponding to the phosphorylation site.

Storage buffer: WB: 1:500~1:1000 IHC: 1:50~1:100

Form: Liquid

References: Medunjanin S, et al. (2005). J Biol Chem.80 (38):33006-33014. Dutertre M, et al. (2003). Mol Endocrinol.17 (7): 1296-1314. Chen D, et al. (2000). Mol Cell.6 (1): 127-137.



For research use only

Antagene, Inc. Toll Free: 1-866-964-2589, Fax: 1-888-225-1868, info@antageneinc.com,
www.antageneinc.com