



## Estrogen Receptor- $\alpha$ (Phospho-Ser104) Antibody

**Cat. #** ANT011070

**Species:** Human and Mouse

**Quantity:** 100ug

**Concentration:** 100ug/100ul

**Storage and Stability:** Store at -20°C/1 year

**Immunogen :** The antiserum was produced against synthesized phosphopeptide derived from human Estrogen Receptor- $\alpha$  around the phosphorylation site of serine 104 (S-V-SP-P-S).

**Specificity:** Estrogen Receptor- $\alpha$  (phospho-Ser104) antibody detects endogenous levels of Estrogen Receptor- $\alpha$  only when phosphorylated at serine104.

**Tested application:** IHC

**Application Notes :** Rabbit IgG in phosphate buffered saline (without  $Mg^{2+}$  and  $Ca^{2+}$ ), pH 7.4, 150mM NaCl, 0.02% sodium azide and 50% glycerol.

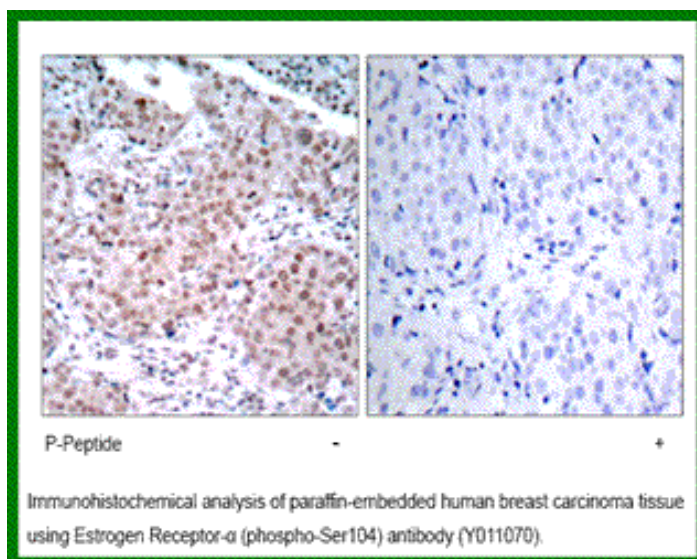
**Raised In:** Rabbit

**Purity:** The antibody was affinity-purified from rabbit antiserum by affinity-chromatography using epitope-specific phosphopeptide. The antibody against non-phosphopeptide was removed by chromatography using non-phosphopeptide corresponding to the phosphorylation site.

**Storage buffer:** IHC: 1:50~1:100

**Form:** Liquid

**References** Medunjanin S, et al. (2005). J Biol Chem.80 (38):33006-33014. Dutertre M, et al. (2003). Mol Endocrinol.17 (7): 1296-1314. Chen D, et al. (2000). Mol Cell.6 (1): 127-137. Rogatsky I, et al. (1999). J Biol Chem.274 (32): 22296-22302.



**For research use only**

Antagene, Inc. Toll Free: 1-866-964-2589, Fax: 1-888-225-1868, [info@antageneinc.com](mailto:info@antageneinc.com),  
[www.antageneinc.com](http://www.antageneinc.com)