



## BAD (Phospho-Ser112) Antibody

**Cat. #** ANTY011067

**Species:** Human and Mouse

**Quantity:** 100ug

**Concentration:** 100ug/100ul

**Storage and Stability:** Store at -20°C/1 year

**Immunogen:** The antiserum was produced against synthesized phosphopeptide derived from human BAD around the phosphorylation site of serine 112 (H-S-SP-Y-P).

**Specificity:** BAD (phospho-Ser112) antibody detects endogenous levels of BAD only when phosphorylated at serine 112.

**Tested application:** WB, IHC

**Application Notes :** Rabbit IgG in phosphate buffered saline (without Mg<sup>2+</sup> and Ca<sup>2+</sup>), pH 7.4, 150mM NaCl, 0.02% sodium azide and 50% glycerol.

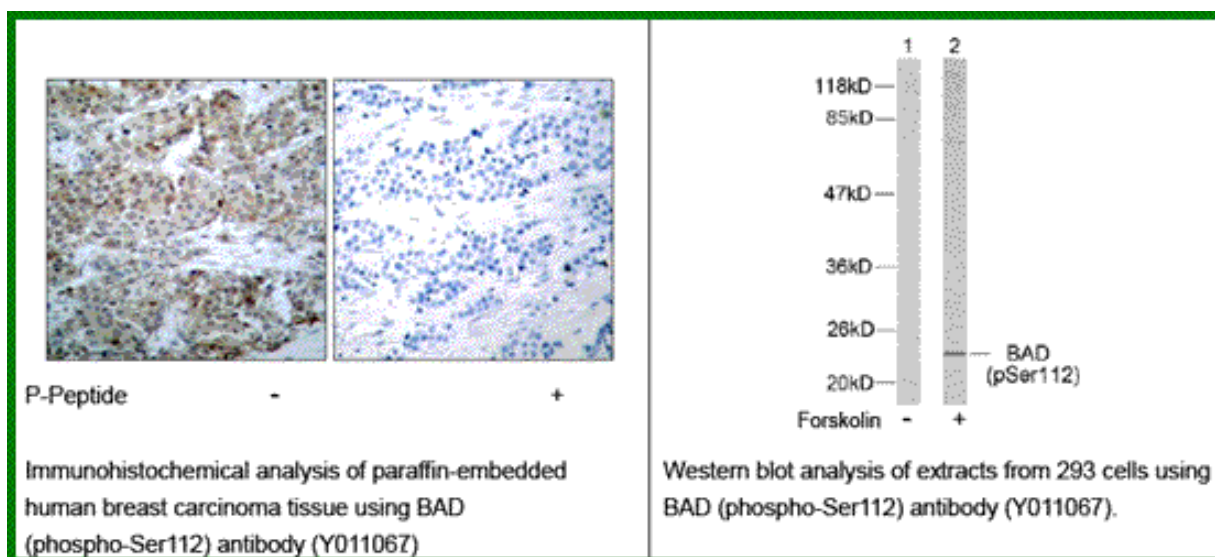
**Raised In:** Rabbit

**Purity:** The antibody was affinity-purified from rabbit antiserum by affinity-chromatography using epitope-specific phosphopeptide. The antibody against non-phosphopeptide was removed by chromatography using non-phosphopeptide corresponding to the phosphorylation site.

**Storage buffer:** WB: 1:500~1:1000 IHC: 1:50~1:100

**Form:** Liquid

**References:** Zhang B, et al. (2004). Mol Cell Biol.24 (14): 6205-6214. Rice PL, et al. (2003). Cancer Res.63 (3): 616-620. Wang XQ, et al. (2001). J Biol Chem.276 (48): 44504-44511.



**For research use only**

Antagene, Inc. Toll Free: 1-866-964-2589, Fax: 1-888-225-1868, [info@antageneinc.com](mailto:info@antageneinc.com),  
[www.antageneinc.com](http://www.antageneinc.com)