



## Ezrin (Phospho-Tyr353) Antibody

**Cat. #** ANTY011063

**Species:** Human and Mouse

**Quantity:** 100ug

**Concentration:** 100ug/100ul

**Storage and Stability:** Store at -20°C/1 year

**Immunogen :** The antiserum was produced against synthesized phosphopeptide derived from human Ezrin around the phosphorylation site of tyrosine 353 (Q-D-YP-E-E).

**Specificity:** Ezrin (phospho-Tyr353) antibody detects endogenous levels of Ezrin only when phosphorylated at tyrosine 353.

**Tested application:** WB

**Application Notes:** Rabbit IgG in phosphate buffered saline (without Mg<sup>2+</sup> and Ca<sup>2+</sup>), pH 7.4, 150mM NaCl, 0.02% sodium azide and 50% glycerol.

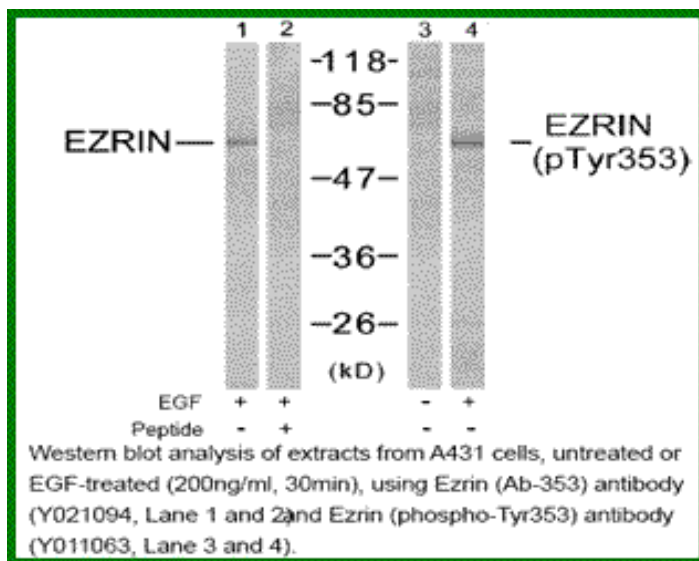
**Raised In:** Rabbit

**Purity :** The antibody was affinity-purified from rabbit antiserum by affinity-chromatography using epitope-specific phosphopeptide. The antibody against non-phosphopeptide was removed by chromatography using non-phosphopeptide corresponding to the phosphorylation site.

**Storage buffer:** WB: 1:500~1:1000

**Form:** Liquid

**References:** Zhao H, et al. (2004) Proc Natl Acad Sci U S A 101 (25): 9485-90. Wang Q, et al. (2003) J Biol Chem 278(48): 47731-43. Gautreau A, et al. (1999) Proc Natl Acad Sci U S A: 96(13): 7300-5. Crepaldi T, et al. (1997) J Cell Biol: 28; 138(2): 423-34.



**For research use only**

Antagene, Inc. Toll Free: 1-866-964-2589, Fax: 1-888-225-1868, [info@antageneinc.com](mailto:info@antageneinc.com),  
[www.antageneinc.com](http://www.antageneinc.com)