



PTEN (Phospho-Ser370) Antibody

Cat. # ANTY011062

Species: Human, Mouse, Rat.

Quantity: 100ug

Concentration: 100ug/100ul

Storage and Stability: Store at -20°C/1 year

Immunogen : The antiserum was produced against synthesized phosphopeptide derived from human PTEN around the phosphorylation site of serine 370 (D-V-SP-D-N).

Specificity: PTEN (phospho-Ser370) antibody detects endogenous levels of PTEN only when phosphorylated at serine 370.

Tested application: Rabbit IgG in phosphate buffered saline (without Mg²⁺ and Ca²⁺), pH 7.4, 150mM NaCl, 0.02% sodium azide and 50% glycerol.

Application Notes: Rabbit IgG in phosphate buffered saline (without Mg²⁺ and Ca²⁺), pH 7.4, 150mM NaCl, 0.02% sodium azide and 50% glycerol.

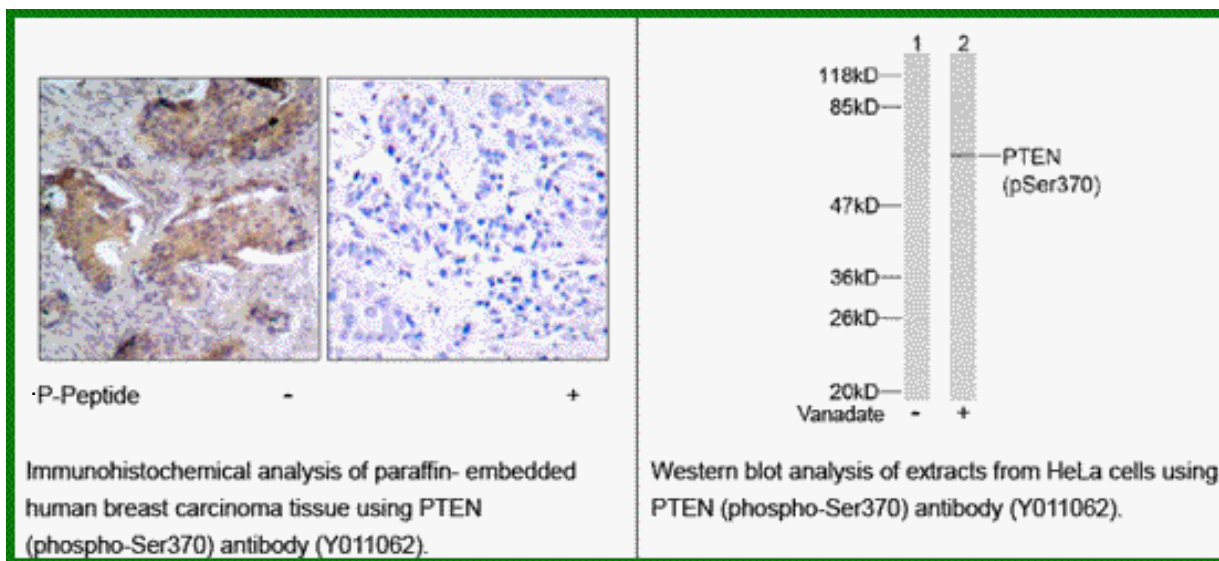
Raised In: Rabbit

Purity : The antibody was affinity-purified from rabbit antiserum by affinity-chromatography using epitope-specific phosphopeptide. The antibody against non-phosphopeptide was removed by chromatography using non-phosphopeptide corresponding to the phosphorylation site.

Storage buffer: WB: 1:500~1:1000 IHC: 1:50~1:100

Form: Liquid

References: Al-Khouri AM, et al. (2005). J Biol Chem.280 (42):35195-35202. Miller SJ, et al. (2002). FEBS Lett. 528(1-3): 145-153. Torres J, et al. (2001). J Biol Chem.276 (2): 993-998. Vazquez F, et al. (2000). Mol Cell Biol.20 (14): 5010-5018.



For research use only

Antagene, Inc. Toll Free: 1-866-964-2589, Fax: 1-888-225-1868, info@antageneinc.com,
www.antageneinc.com