



Chk2 (Phospho-Thr68) Antibody

Cat. # ANTY011061

Species: Human, Mouse, Rat.

Quantity: 100ug

Concentration: 100ug/100ul

Storage and Stability: Store at -20°C/1 year

Immunogen : The antiserum was produced against synthesized phosphopeptide derived from human Chk2 around the phosphorylation site of threonine 68 (V-S-TP-Q-E).

Specificity: Chk2 (phospho-Thr68) antibody detects endogenous levels of Chk2 only when phosphorylated at threonine 68.

Tested application: WB and IHC

Application Notes: Rabbit IgG in phosphate buffered saline (without Mg²⁺ and Ca²⁺), pH 7.4, 150mM NaCl, 0.02% sodium azide and 50% glycerol.

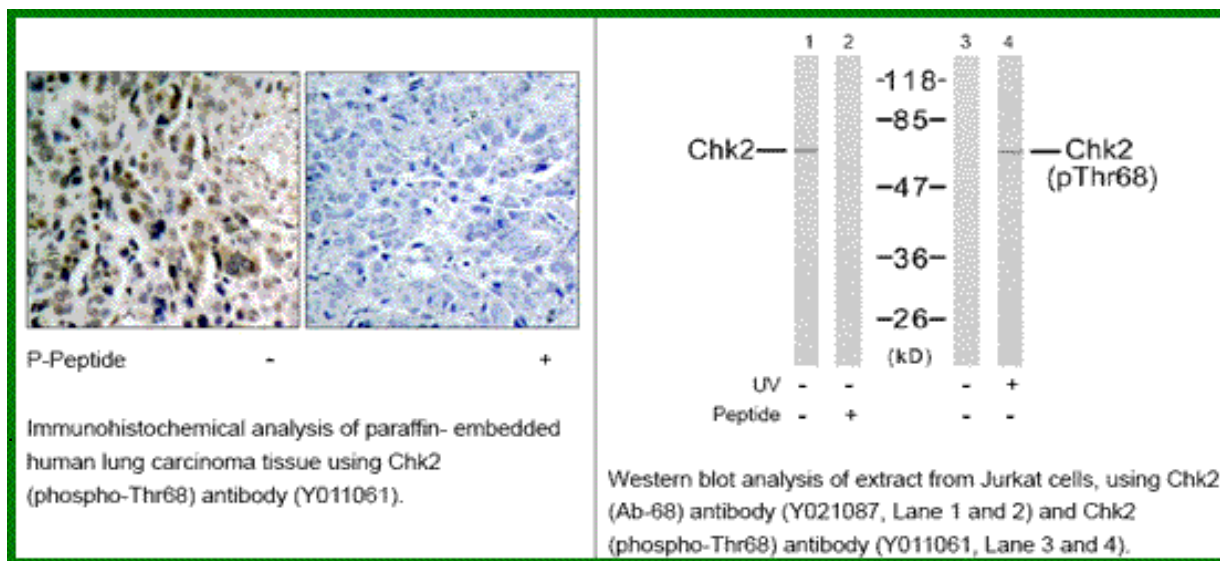
Raised In: Rabbit

Purity : The antibody was affinity-purified from rabbit antiserum by affinity-chromatography using epitope-specific phosphopeptide. The antibody against non-phosphopeptide was removed by chromatography using non-phosphopeptide corresponding to the phosphorylation site.

Storage buffer: WB: 1:500~1:1000 IHC: 1:50~1:100

Form: Liquid

References: Gorgoulis VG, et al. (2005) Nature; 434(7035): 907-13. Falck J, et al. (2005) Nature; 434(7033): 605-11. Jin ZH, et al. (2005) Oncogene; 24(12): 1973-81. Li J, et al. (2005) J Biol Chem; 280(12): 12041-50.



For research use only

Antagene, Inc. Toll Free: 1-866-964-2589, Fax: 1-888-225-1868, info@antageneinc.com,
www.antageneinc.com