



Integrin $\beta 3$ (Phospho-Tyr773) Antibody

Cat. # ANTY011060

Species: Human, Mouse, Rat.

Quantity: 100ug

Concentration: 100ug/100ul

Storage and Stability: Store at -20°C/1 year

Immunogen : The antiserum was produced against synthesized phosphopeptide derived from human Integrin $\beta 3$ around the phosphorylation site of tyrosine 773 (P-L-YP-K-E).

Specificity: Integrin $\beta 3$ (phospho-Tyr773) antibody detects endogenous levels of Integrin $\beta 3$ only when phosphorylated at tyrosine 773.

Tested application: WB and IHC

Application Notes: Rabbit IgG in phosphate buffered saline (without Mg^{2+} and Ca^{2+}), pH 7.4, 150mM NaCl, 0.02% sodium azide and 50% glycerol.

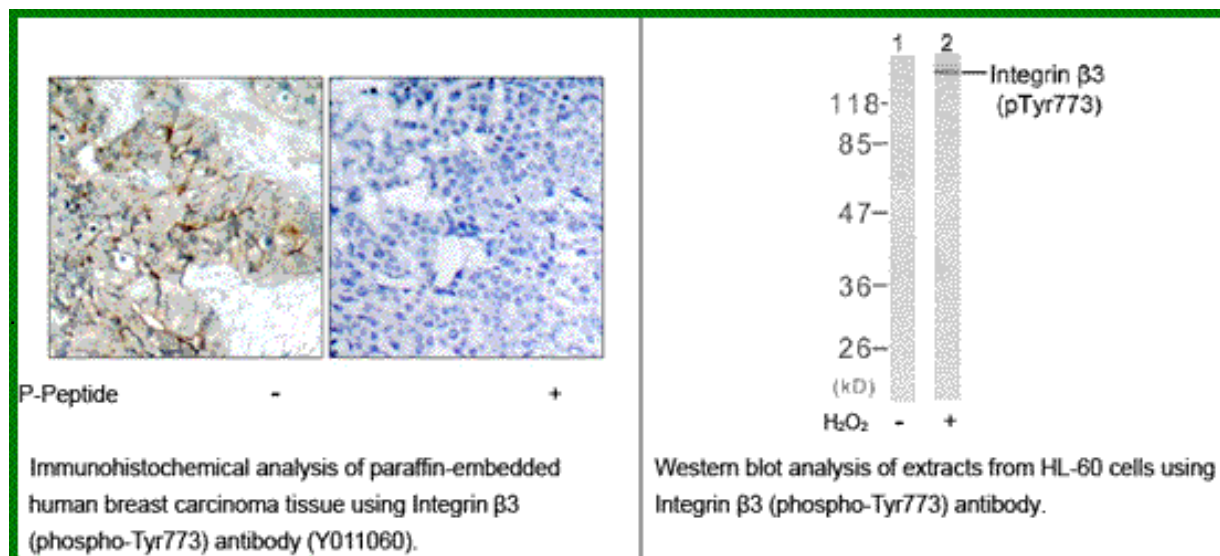
Raised In: Rabbit

Purity : The antibody was affinity-purified from rabbit antiserum by affinity-chromatography using epitope-specific phosphopeptide. The antibody against non-phosphopeptide was removed by chromatography using non-phosphopeptide corresponding to the phosphorylation site.

Storage buffer: WB: 1:500~1:1000 IHC: 1:50~1:100

Form: Liquid

References: Chandhoke SK, et al. (2004) J Cell Sci.117 (Pt 8): 1431-1441. Datta A, et al. (2002) J Biol Chem.277 (6): 3943-3949. Law DA, et al. (1996) J Biol Chem.271 (18): 10811-10815.



For research use only

Antagene, Inc. Toll Free: 1-866-964-2589, Fax: 1-888-225-1868, info@antageneinc.com,
www.antageneinc.com