



Akt (Phospho-Ser473) Antibody

Cat. # ANTY011054

Species: Human, Mouse and Rat

Quantity: 100ug

Concentration: 100ug/100ul

Storage and Stability: Store at -20°C/1 year

Immunogen : The antiserum was produced against synthesized phosphopeptide derived from human Akt around the phosphorylation site of serine 473 (Q-F-SP-Y-S).

Specificity: Akt (phospho-Ser473) antibody detects endogenous levels of Akt only when phosphorylated at serine 473.

Tested application: WB and IHC

Application Notes: Rabbit IgG in phosphate buffered saline (without Mg²⁺ and Ca²⁺), pH 7.4, 150mM NaCl, 0.02% sodium azide and 50% glycerol.

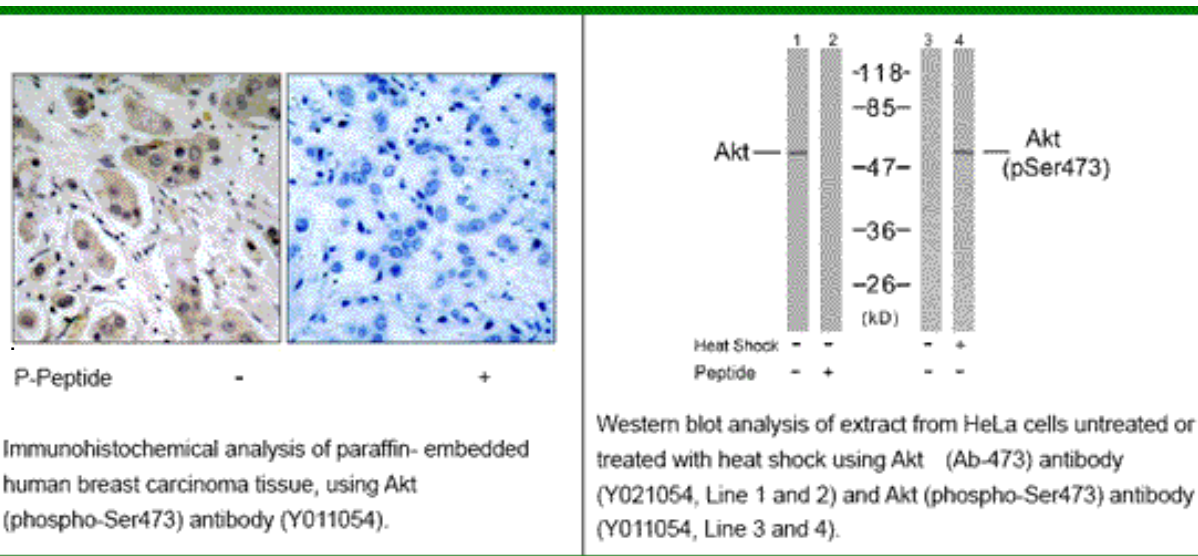
Raised In: Rabbit

Purity : The antibody was affinity-purified from rabbit antiserum by affinity-chromatography using epitope-specific phosphopeptide. The antibody against non-phosphopeptide was removed by chromatography using non-phosphopeptide corresponding to the phosphorylation site.

Storage buffer: WB: 1:500~1:1000 IHC: 1:50~1:100

Form: Liquid

References: Baudhuin LM, et al. (2004) FASEB J Feb; 18(2): 341-3. Min YH, et al. (2004) Cancer Res; 64(15): 5225-31. Feng J, et al. (2004) J Biol Chem; 279(34): 35510-7.



For research use only

Antagene, Inc. Toll Free: 1-866-964-2589, Fax: 1-888-225-1868, info@antageneinc.com,
www.antageneinc.com