



CREB (Phospho-Ser133) Antibody

Cat. # ANTY011052

Species: Human, Mouse and Rat

Quantity: 100ug

Concentration: 100ug/100ul

Storage and Stability: Store at -20°C/1 year

Immunogen : The antiserum was produced against synthesized phosphopeptide derived from human CREB around the phosphorylation site of serine 133 (R-P-SP-Y-R).

Specificity: CREB (phospho-Ser133) antibody detects endogenous levels of CREB only when phosphorylated at serine 133.

Tested application: WB and IHC

Application Notes: Rabbit IgG in phosphate buffered saline (without Mg²⁺ and Ca²⁺), pH 7.4, 150mM NaCl, 0.02% sodium azide and 50% glycerol.

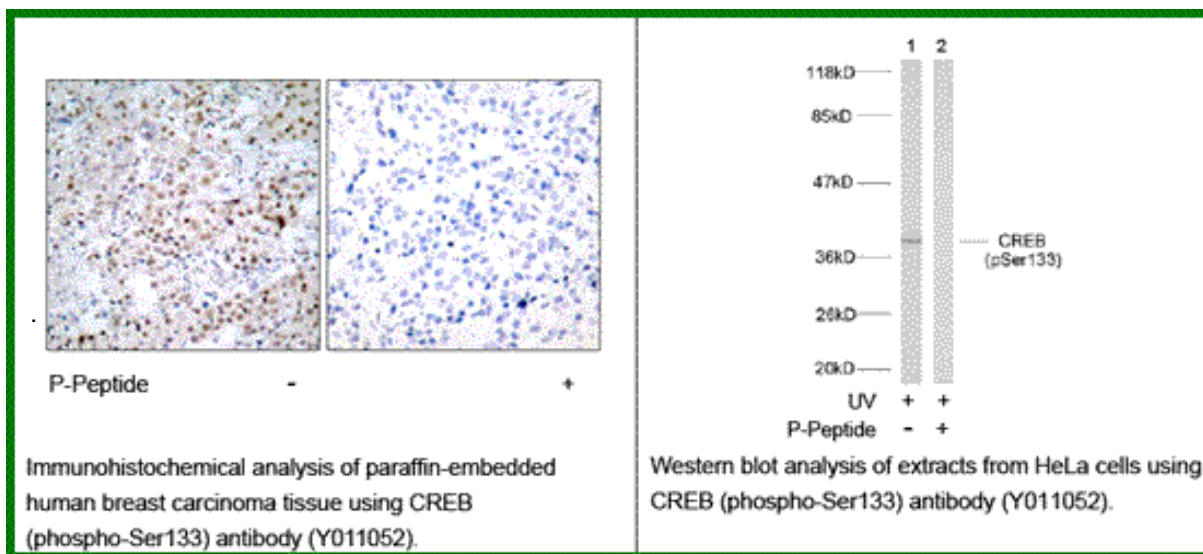
Raised In: Rabbit

Purity : The antibody was affinity-purified from rabbit antiserum by affinity-chromatography using epitope-specific phosphopeptide. The antibody against non-phosphopeptide was removed by chromatography using non-phosphopeptide corresponding to the phosphorylation site.

Storage buffer: WB: 1:500~1:1000 IHC: 1:50~1:100

Form: Liquid

References: Xing J, et al. (1998) Mol Cell Biol 18(4): 1946-55. Tan Y, et al. (1996) EMBO J; 15(17): 4629-42. Hao, M. et al. (1996) J. Biol. Chem. 271, 29380-29385. Mayo LD, et al. (2001) Biol Chem; 276(27): 25184-9.



For research use only

Antagene, Inc. Toll Free: 1-866-964-2589, Fax: 1-888-225-1868, info@antageneinc.com,
www.antageneinc.com