



STAT5A (Phospho-Ser780) Antibody

Cat. #: ANTY011049

Species: Human, Mouse and Rat

Quantity: 100ug

Concentration: 100ug/100ul

Storage and Stability: Store at -20°C/1 year

Immunogen: The antiserum was produced against synthesized phosphopeptide derived from human STAT5A around the phosphorylation site of serine 780 (R-L-SP-P-P).

Specificity: STAT5A (phospho-Ser780) antibody detects endogenous levels of STAT5A only when phosphorylated at serine 780.

Tested application: WB and IHC

Application Notes: Rabbit IgG in phosphate buffered saline (without Mg²⁺ and Ca²⁺), pH 7.4, 150mM NaCl, 0.02% sodium azide and 50% glycerol.

Raised In: Rabbit

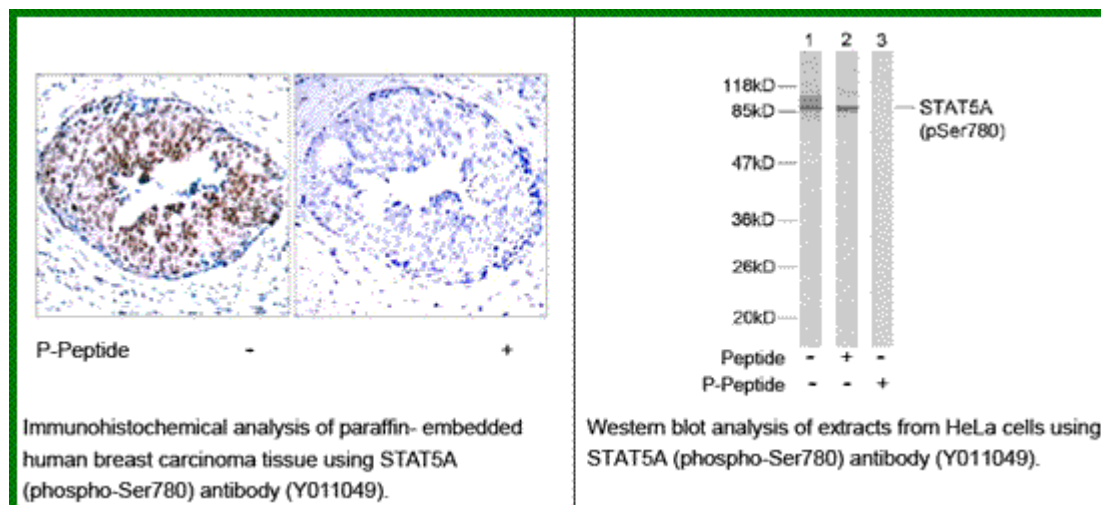
Purity: The antibody was affinity-purified from rabbit antiserum by affinity-chromatography using epitope-specific phosphopeptide. The antibody against non-phosphopeptide was removed by chromatography using non-phosphopeptide corresponding to the phosphorylation site.

Storage buffer: WB: 1:500~1:1000 IHC: 1:50~1:100

Form: Liquid

References

Gouilleux F, et al. (1994) EMBO J. 13: 4361-4369. Dentelli P, et al. (1999) J Immunol. 163: 2151-2159. Meinke A, et al. (1996) Mol Cell Biol. 16: 6937-6944.



For research use only

Antagene, Inc. Toll Free: 1-866-964-2589, Fax: 1-888-225-1868, info@antageneinc.com,
www.antageneinc.com