



STAT4 (Phospho-Tyr693) Antibody

Cat. # ANTY011047

Species: Human, Mouse and Rat

Quantity: 100ug

Concentration: 100ug/100ul

Storage and Stability: Store at -20°C/1 year

Immunogen : The antiserum was produced against synthesized phosphopeptide derived from human STAT4 around the phosphorylation site of tyrosine 693 (K-G-YP-V-P).

Specificity: STAT4 (phospho-Tyr693) antibody detects endogenous levels of STAT4 only when phosphorylated at tyrosine 693.

Tested application: WB and IHC

Application Notes: Rabbit IgG in phosphate buffered saline (without Mg²⁺ and Ca²⁺), pH 7.4, 150mM NaCl, 0.02% sodium azide and 50% glycerol.

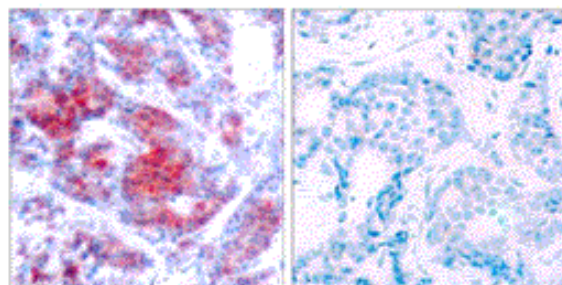
Raised In: Rabbit

Purity: The antibody was affinity-purified from rabbit antiserum by affinity-chromatography using epitope-specific phosphopeptide. The antibody against non-phosphopeptide was removed by chromatography using non-phosphopeptide corresponding to the phosphorylation site.

Storage buffer: WB: 1:500~1:1000 IHC: 1:50~1:100

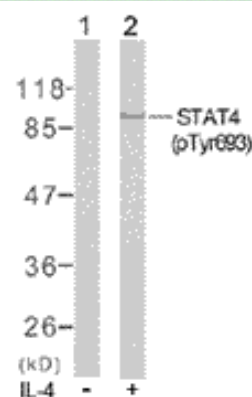
Form: Liquid

References: Strausberg R L, et al. (2002) Proc Natl Acad Sci U S A. 99(26):16899-16903.



P-Peptide - +

Immunohistochemical analysis of paraffin-embedded human breast carcinoma tissue using STAT4 (phospho-Tyr693) antibody (Y011047).



Western blot analysis of extracts from HeLa cells using STAT4 (phospho-Tyr693) antibody (Y011047).

For research use only

Antagene, Inc. Toll Free: 1-866-964-2589, Fax: 1-888-225-1868, info@antageneinc.com,
www.antageneinc.com