



STAT1 (Phospho-Tyr701) Antibody

Cat. #ANTY011044

Species: Human, Mouse and Rat

Quantity: 100ug

Concentration: 100ug/100ul

Storage and Stability: Store at -20°C/1 year

Immunogen: The antiserum was produced against synthesized phosphopeptide derived from human STAT1 around the phosphorylation site of tyrosine 701 (T-G-YP-I-K).

Specificity: STAT1 (phospho-Tyr701) antibody detects endogenous levels of STAT1 only when phosphorylated at tyrosine 701.

Tested application: WB and IHC

Application Notes: Rabbit IgG in phosphate buffered saline (without Mg²⁺ and Ca²⁺), pH 7.4, 150mM NaCl, 0.02% sodium azide and 50% glycerol.

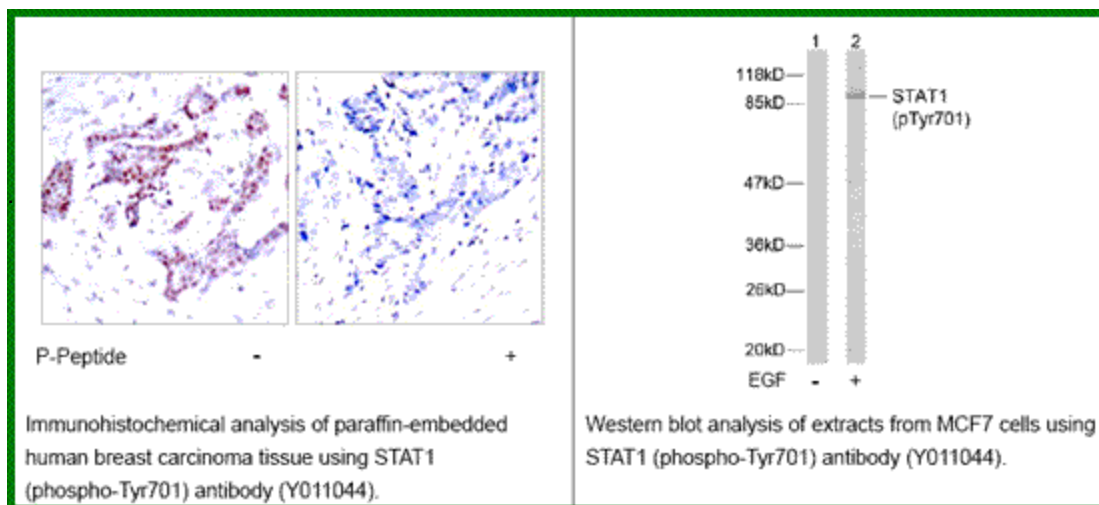
Raised In: Rabbit

Purity: The antibody was affinity-purified from rabbit antiserum by affinity-chromatography using epitope-specific phosphopeptide. The antibody against non-phosphopeptide was removed by chromatography using non-phosphopeptide corresponding to the phosphorylation site.

Storage buffer: WB: 1:500~1:1000 IHC: 1:50~1:100

Form: Liquid

References: Heim M H, (1999) J Recept Signal Transduct Res. 19: 75-120. Durbin J E, et al. (1996) Cell. 84: 443-450. Demoulin J, B. et al. (1999) J Biol Chem. 274: 25855-258. Ihle J N, et al. (1994) Trends Biochem Sci. 19: 222-227.



For research use only

Antagene, Inc. Toll Free: 1-866-964-2589, Fax: 1-888-225-1868, info@antageneinc.com,
www.antageneinc.com