



GATA1 (Phospho-Ser142) Antibody

Cat. # ANT011041

Species: Human, Mouse and Rat

Quantity: 100ug

Concentration: 100ug/100ul

Storage and Stability: Store at -20°C/1 year

Immunogen: The antiserum was produced against synthesized phosphopeptide derived from human GATA-1 around the phosphorylation site of serine 142 (R-L-SP-P-D).

Specificity: GATA-1 (phospho-Ser142) antibody detects endogenous levels of GATA-1 only when phosphorylated at serine 142.

Tested application: WB and IHC

Application Notes: Rabbit IgG in phosphate buffered saline (without Mg²⁺ and Ca²⁺), pH 7.4, 150mM NaCl, 0.02% sodium azide and 50% glycerol.

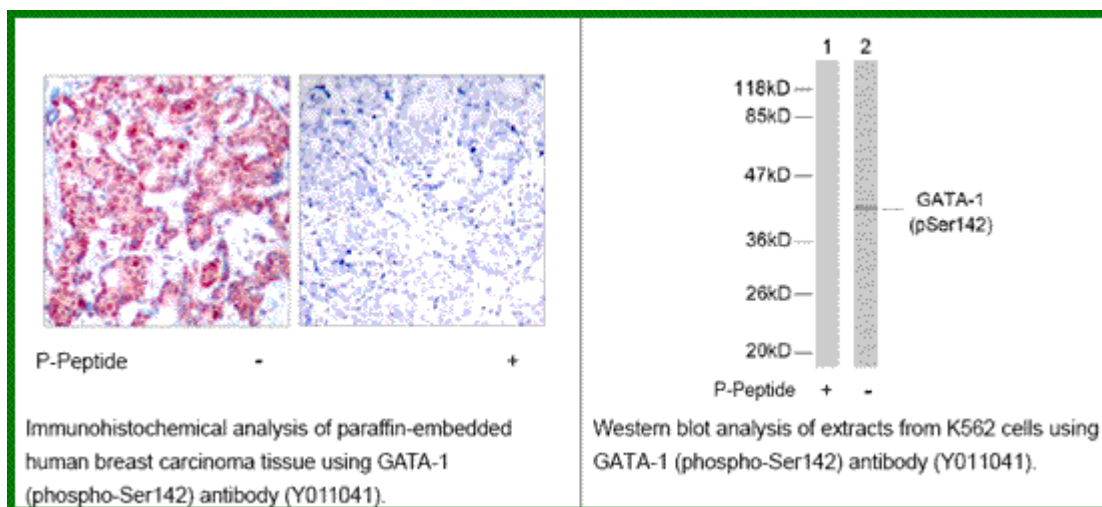
Raised In: Rabbit

Purity : The antibody was affinity-purified from rabbit antiserum by affinity-chromatography using epitope-specific phosphopeptide. The antibody against non-phosphopeptide was removed by chromatography using non-phosphopeptide corresponding to the phosphorylation site.

Storage buffer: WB: 1:500~1:1000 IHC: 1:50~1:100

Form: Liquid

References: Zon LI, et al. (1990) Proc Natl Acad. Sci USA. 87: 668-672. Trainor C D, et al. (1990) Nature. 343: 92-96. Nichols K E, et al. (2000) Nat Genet. 24: 266-270.



For research use only

Antagene, Inc. Toll Free: 1-866-964-2589, Fax: 1-888-225-1868, info@antageneinc.com,
www.antageneinc.com