



Elk-1 (Phospho-Thr417) Antibody

Cat. #: ANTY011038

Species: Human, Mouse and Rat

Quantity: 100ug

Concentration: 100ug/100ul

Storage and Stability: Store at -20°C/1 year

Immunogen: The antiserum was produced against synthesized phosphopeptide derived from human Elk-1 around the phosphorylation site of threonine 417 (L-S-TP-P-V).

Specificity: Elk-1 (phospho-Thr417) antibody detects endogenous levels of Elk-1 only when phosphorylated at threonine 417.

Tested application: IHC

Application Notes: Rabbit IgG in phosphate buffered saline (without Mg²⁺ and Ca²⁺), pH 7.4, 150mM NaCl, 0.02% sodium azide and 50% glycerol.

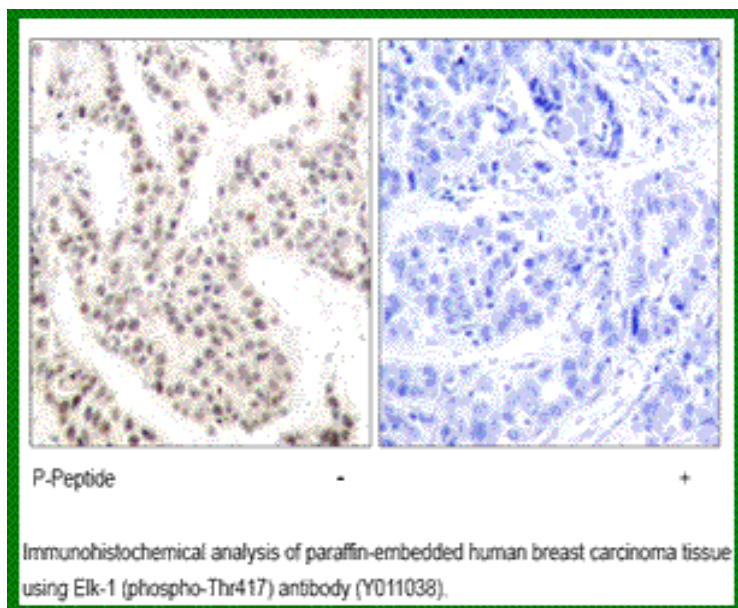
Raised In: Rabbit

Purity : The antibody was affinity-purified from rabbit antiserum by affinity-chromatography using epitope-specific phosphopeptide. The antibody against non-phosphopeptide was removed by chromatography using non-phosphopeptide corresponding to the phosphorylation site.

Storage buffer: IHC: 1:50~1:100

Form: Liquid

References: Huang Y, et al. (2000) Biochem Biophys Res Commun. 271(2): 456-463. Marais R, et al. (1993) Cell 73:381-393. Kortjenann M, et al. (1994) Mol Cell Biol. 14:4815-4824. Hill C S, et al. (1995) Cell. 80:199-211. Cavigelli M, et al. (1995) EMBO J. 14:5957-5964.



For research use only

Antagene, Inc. Toll Free: 1-866-964-2589, Fax: 1-888-225-1868, info@antageneinc.com,
www.antageneinc.com