



Myc (Phospho-Thr358) Antibody

Cat. #: ANTY011035

Species: Human, Mouse and Rat

Quantity: 100ug

Concentration: 100ug/100ul

Storage and Stability: Store at -20°C/1 year

Immunogen: The antiserum was produced against synthesized phosphopeptide derived from human Myc around the phosphorylation site of threonine 358 (R-R-TP-H-N).

Specificity: Myc (phospho-Thr358) antibody detects endogenous levels of Myc only when phosphorylated at threonine 358.

Tested application: IHC

Application Notes: Rabbit IgG in phosphate buffered saline (without Mg²⁺ and Ca²⁺), pH 7.4, 150mM NaCl, 0.02% sodium azide and 50% glycerol.

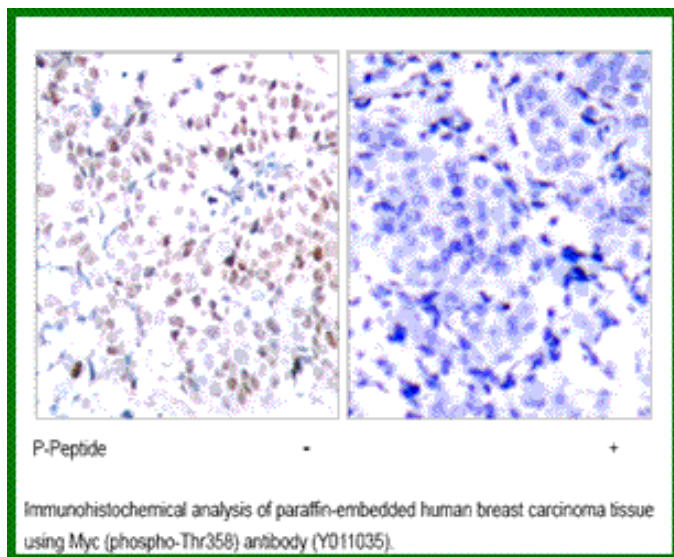
Raised In: Rabbit

Purity : The antibody was affinity-purified from rabbit antiserum by affinity-chromatography using epitope-specific phosphopeptide. The antibody against non-phosphopeptide was removed by chromatography using non-phosphopeptide corresponding to the phosphorylation site.

Storage buffer: IHC: 1:50~1:100

Form: Liquid

References: Baudino T A, et al. (2001) Mol Cell Biol. 21: 691-702. Blackwood E M, et al. (1991) Science. 251:1211-1217. Henriksson M, et al. (1996) Adv Cancer Res. 68: 109-182. Grandori C, et al. (2000) Annu Rev Cell Dev Biol. 16: 653-699.



For research use only

Antagene, Inc. Toll Free: 1-866-964-2589, Fax: 1-888-225-1868, info@antageneinc.com,
www.antageneinc.com