



## ATF2 (Phospho-Ser44[Ser62]) Antibody

**Cat. #:** ANTY011029

**Species:** Human, Mouse and Rat

**Quantity:** 100ug

**Concentration:** 100ug/100ul

**Storage and Stability:**

Store at -20°C/1 year

**Immunogen:** The antiserum was produced against synthesized phosphopeptide derived from human ATF-2 around the phosphorylation site of serine 62 or 44 (N-D-SP-V-I).

**Specificity:** ATF-2 (phospho-Ser62 or 44) antibody detects endogenous levels of ATF-2 only when phosphorylated at serine 62 or 44.

**Tested application:** IHC

**Application Notes:** Rabbit IgG in phosphate buffered saline (without Mg<sup>2+</sup> and Ca<sup>2+</sup>), pH 7.4, 150mM NaCl, 0.02% sodium azide and 50% glycerol.

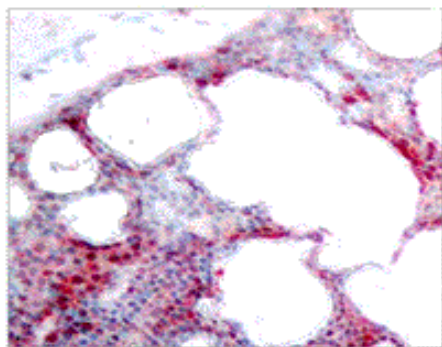
**Raised In:** Rabbit

**Purity :** The antibody was affinity-purified from rabbit antiserum by affinity-chromatography using epitope-specific phosphopeptide. The antibody against non-phosphopeptide was removed by chromatography using non-phosphopeptide corresponding to the phosphorylation site.

**Storage buffer:** IHC: 1:50~1:100

**Form:** Liquid

**References:** Sevilla A, et al. (2004) J Biol Chem. 279(26):27458-27465. Sakurai A, et al. (1991) Biochem Biophys Res Commun. 181(2): 629-635. Abdel-Hafiz H A, et al. (1992) Mol Endocrinol. 6: 2079-2089. Gupta S, et al. (1995) Science. 267: 389-393. Van Dam H, et al. (1995) EMBO J. 14(8): 1798-1811.



Immunohistochemical analysis of paraffin-embedded human breast carcinoma tissue using ATF-2 (phospho-Ser62 or 44) antibody (Y011029).

**For research use only**

Antagene, Inc. Toll Free: 1-866-964-2589, Fax: 1-888-225-1868, [info@antageneinc.com](mailto:info@antageneinc.com),  
[www.antageneinc.com](http://www.antageneinc.com)