



JunB (Phospho-Ser79) Antibody

Cat. #: ANTY011026

Species: Human, Mouse and Rat

Quantity: 100ug

Concentration: 100ug/100ul

Storage and Stability:

Store at -20°C/1 year

Immunogen: The antiserum was produced against synthesized phosphopeptide derived from human JunB around the phosphorylation site of serine 79 (G-A-SP-L-K).

Specificity: JunB (phospho-Ser79) antibody detects endogenous levels of JunB only when phosphorylated at serine 79.

Tested application: IHC

Application Notes: Rabbit IgG in phosphate buffered saline (without Mg²⁺ and Ca²⁺), pH 7.4, 150mM NaCl, 0.02% sodium azide and 50% glycerol.

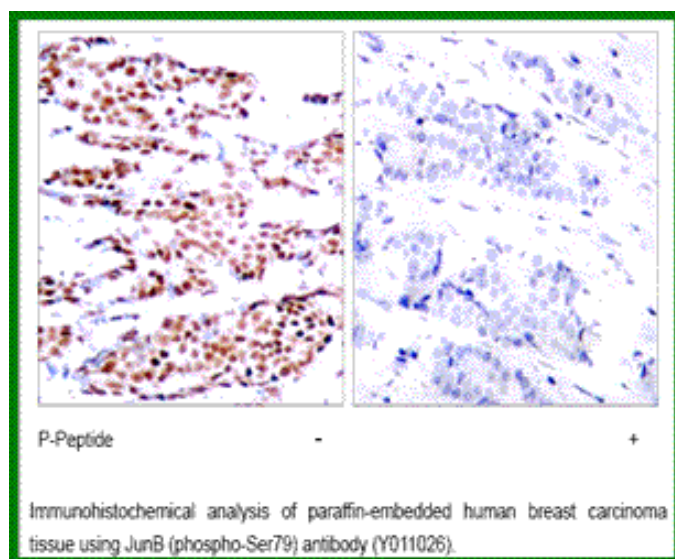
Raised In: Rabbit

Purity : The antibody was affinity-purified from rabbit antiserum by affinity-chromatography using epitope-specific phosphopeptide. The antibody against non-phosphopeptide was removed by chromatography using non-phosphopeptide corresponding to the phosphorylation site.

Storage buffer: IHC: 1:50~1:100

Form: Liquid

References: Narayanan K, et al. (2004) J Biol Chem. 279(43): 44294-442302.



For research use only

Antagene, Inc. Toll Free: 1-866-964-2589, Fax: 1-888-225-1868, info@antageneinc.com,
www.antageneinc.com