



c-Jun (Phospho-Ser243) Antibody

Cat. #: ANTY011025

Species: Human, Mouse and Rat

Quantity: 100ug

Concentration: 100ug/100ul

Storage and Stability:

Store at -20°C/1 year

Immunogen: The antiserum was produced against synthesized phosphopeptide derived from human c-Jun around the phosphorylation site of serine 243 (P-L-SP-P-I).

Specificity: c-Jun (phospho-Ser243) antibody detects endogenous levels of c-Jun only when phosphorylated at serine 243.

Tested application: WB and IHC

Application Notes: Rabbit IgG in phosphate buffered saline (without Mg²⁺ and Ca²⁺), pH 7.4, 150mM NaCl, 0.02% sodium azide and 50% glycerol.

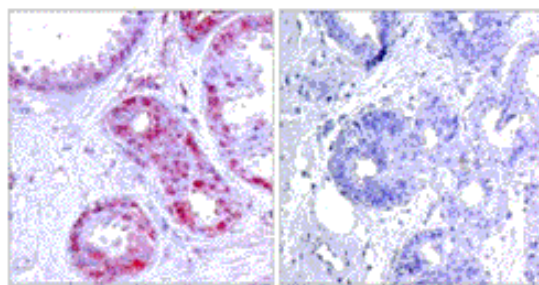
Raised In: Rabbit

Purity : The antibody was affinity-purified from rabbit antiserum by affinity-chromatography using epitope-specific phosphopeptide. The antibody against nonphosphopeptide was removed by chromatography using non-phosphopeptide corresponding to the phosphorylation site.

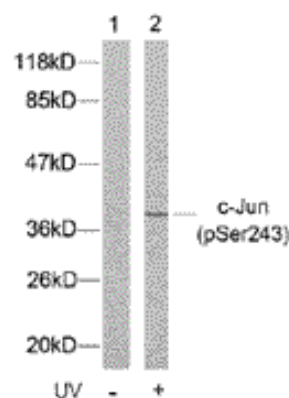
Storage buffer: WB: 1:500~1:1000 IHC: 1:50~1:100

Form: Liquid

References: Boyle W J, et al. (1991) Cell. 64(3): 573-584. Binetruy B, et al. (1991) Nature. 351: 122-127. Smeal T, et al. (1991) Nature. 354:494-496. Derijard B, et al. (1994) Cell. 76:1025-1037. Kyriakis J M, et al. (1994) Nature. 369: 156-160.



P-Peptide - +
Immunohistochemical analysis of paraffin-embedded human breast carcinoma tissue using c-Jun (phospho-Ser243) antibody (Y011025).



Western blot analysis of extract from HeLa cells untreated or treated with UV using c-Jun (phospho-Ser243) antibody (Y011025).

For research use only

Antagene, Inc. Toll Free: 1-866-964-2589, Fax: 1-888-225-1868, info@antageneinc.com,
www.antageneinc.com