



c-Jun (Phospho-Thr239) Antibody

Cat. #: ANTY011024

Species: Human, Mouse and Rat

Quantity: 100ug

Concentration: 100ug/100ul

Storage and Stability:

Store at -20°C/1 year

Immunogen:

The antiserum was produced against synthesized phosphopeptide derived from human c-Jun around the phosphorylation site of threonine 239 (G-E-TP-P-P).

Specificity: c-Jun (phospho-Thr239) antibody detects endogenous levels of c-Jun only when phosphorylated at threonine 239.

Tested application: WB and IHC

Application Notes: Rabbit IgG in phosphate buffered saline (without Mg²⁺ and Ca²⁺), pH 7.4, 150mM NaCl, 0.02% sodium azide and 50% glycerol.

Raised In: Rabbit

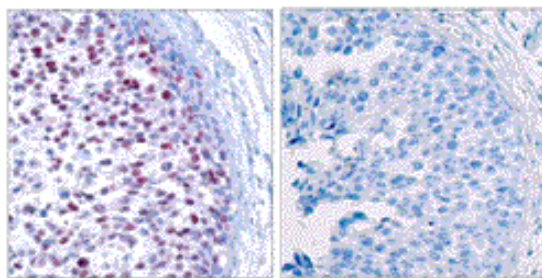
Purity : The antibody was affinity-purified from rabbit antiserum by affinity-chromatography using epitope-specific phosphopeptide. The antibody against non-phosphopeptide was removed by chromatography using non-phosphopeptide corresponding to the phosphorylation site.

Storage buffer:

WB: 1:500~1:1000 IHC: 1:50~1:100

Form: Liquid

References: Boyle W J, et al. (1991) Cell. 64(3): 573-584. Binetruy B, et al. (1991) Nature. 351: 122-127. Smeal T, et al. (1991) Nature. 354:494-496. Derijard B, et al. (1994) Cell. 76:1025-1037. Kyriakis J M, et al. (1994) Nature. 369: 156-160.

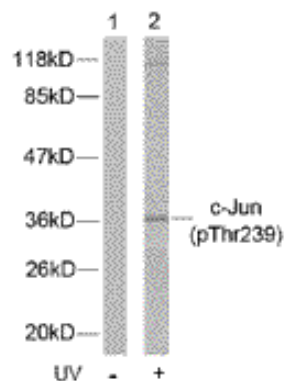


P-Peptide

-

+

Immunohistochemical analysis of paraffin-embedded human breast carcinoma tissue using c-Jun (phospho-Thr239) antibody (Y011024).



Western blot analysis of extract from HeLa cells untreated or treated with UV using c-Jun (phospho-Thr239) antibody (Y011024).

For research use only

Antagene, Inc. Toll Free: 1-866-964-2589, Fax: 1-888-225-1868, info@antageneinc.com,
www.antageneinc.com