



## c-Jun (Phospho-Tyr170) Antibody

**Cat. #:** ANTY011023

**Species:** Human, Mouse and Rat

**Quantity:** 100ug

**Concentration:** 100ug/100ul

**Storage and Stability:**

Store at -20°C/1 year

**Immunogen:**

The antiserum was produced against synthesized phosphopeptide derived from human c-Jun around the phosphorylation site of tyrosine 170 (P-V-YP-A-N).

**Specificity:** c-Jun (phospho-Tyr170) antibody detects endogenous levels of c-Jun only when phosphorylated at tyrosine 170.

**Tested application:** WB

**Application Notes:** Rabbit IgG in phosphate buffered saline (without Mg<sup>2+</sup> and Ca<sup>2+</sup>), pH 7.4, 150mM NaCl, 0.02% sodium azide and 50% glycerol.

**Raised In:** Rabbit

**Purity :** The antibody was affinity-purified from rabbit antiserum by affinity-chromatography using epitope-specific phosphopeptide. The antibody against non-phosphopeptide was removed by chromatography using non-phosphopeptide corresponding to the phosphorylation site.

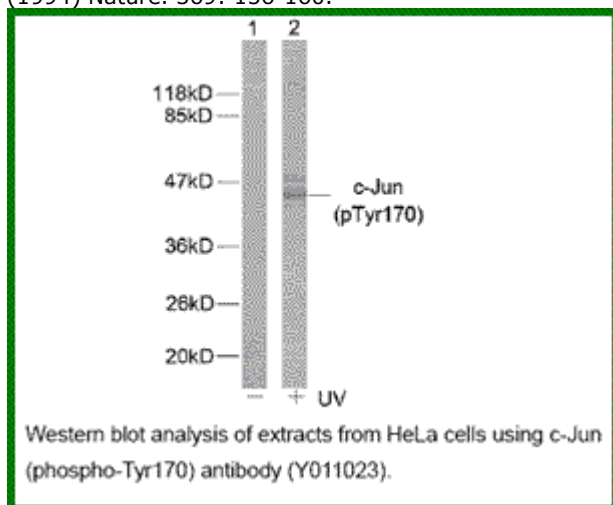
**Storage buffer:**

WB: 1:500~1:1000

**Form:** Liquid

**References:**

Barila D, et al. (2000) EMBO J.19(2): 273-281. Binetruy B, et al. (1991) Nature. 351: 122-127. Smeal T, et al. (1991) Nature. 354:494-496. Derijard B, et al. (1994) Cell. 76:1025-1037. Kyriakis J M, et al. (1994) Nature. 369: 156-160.



**For research use only**

Antagene, Inc. Toll Free: 1-866-964-2589, Fax: 1-888-225-1868, [info@antageneinc.com](mailto:info@antageneinc.com),  
[www.antageneinc.com](http://www.antageneinc.com)