



## NF- $\kappa$ B p105/p50 (Phospho-Ser337) Antibody

**Cat. #:** ANTY011017

**Species:** Human, Mouse and Rat

**Quantity:** 100ug

**Concentration:** 100ug/100ul

**Storage and Stability:** Store at -20°C/1 year

### Immunogen:

The antiserum was produced against synthesized phosphopeptide derived from human NF- $\kappa$ B p105/p50 around the phosphorylation site of serine 337 (R-K-SP-D-L).

**Specificity:** NF- $\kappa$ B p105/p50 (phospho-Ser337) antibody detects endogenous levels of NF- $\kappa$ B p105/p50 only when phosphorylated at serine 337.

**Tested application:** IHC

**Application Notes:** Rabbit IgG in phosphate buffered saline (without Mg<sup>2+</sup> and Ca<sup>2+</sup>), pH 7.4, 150mM NaCl, 0.02% sodium azide and 50% glycerol.

**Raised In:** Rabbit

### Purity:

The antibody was affinity-purified from rabbit antiserum by affinity-chromatography using epitope-specific phosphopeptide. The antibody against non-phosphopeptide was removed by chromatography using non-phosphopeptide corresponding to the phosphorylation site.

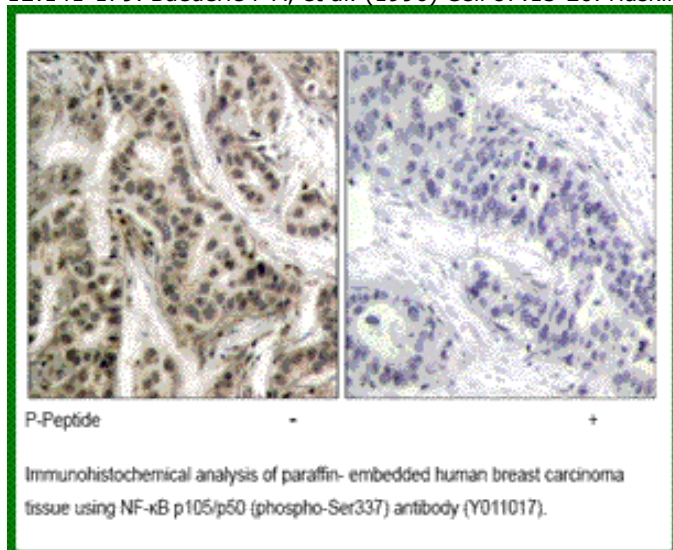
### Storage buffer:

IHC: 1:50~1:100

**Form:** Liquid

### References

Hou S, et al. (2003) J Biol Chem. 278(46): 45994-45998. Baeuerle P A, et al. (1994) Annu Rev Immunol. 12:141-179. Baeuerle P A, et al. (1996) Cell 87:13-20. Haskill S, et al. (1991) Cell 65:1281-1289.



**For research use only**

Antagene, Inc. Toll Free: 1-866-964-2589, Fax: 1-888-225-1868, [info@antageneinc.com](mailto:info@antageneinc.com),  
[www.antageneinc.com](http://www.antageneinc.com)