



NF-κB p100/p52 (Phospho-Ser869) Antibody

Cat. #: ANTY011016

Species: Human, Mouse and Rat

Quantity: 100ug

Concentration: 100ug/100ul

Storage and Stability: Store at -20°C/1 year

Immunogen:

The antiserum was produced against synthesized phosphopeptide derived from human NF-κB around the phosphorylation site of serine 869 (Y-G-SP-Q-S).

Specificity: NF-κB p100/p52 (phospho-Ser869) antibody detects endogenous levels of NF-κB p100/p52 only when phosphorylated at serine 869.

Tested application: WB and IHC

Application Notes: Rabbit IgG in phosphate buffered saline (without Mg²⁺ and Ca²⁺), pH 7.4, 150mM NaCl, 0.02% sodium azide and 50% glycerol.

Raised In: Rabbit

Purity:

The antibody was affinity-purified from rabbit antiserum by affinity-chromatography using epitope-specific phosphopeptide. The antibody against non-phosphopeptide was removed by chromatography using non-phosphopeptide corresponding to the phosphorylation site.

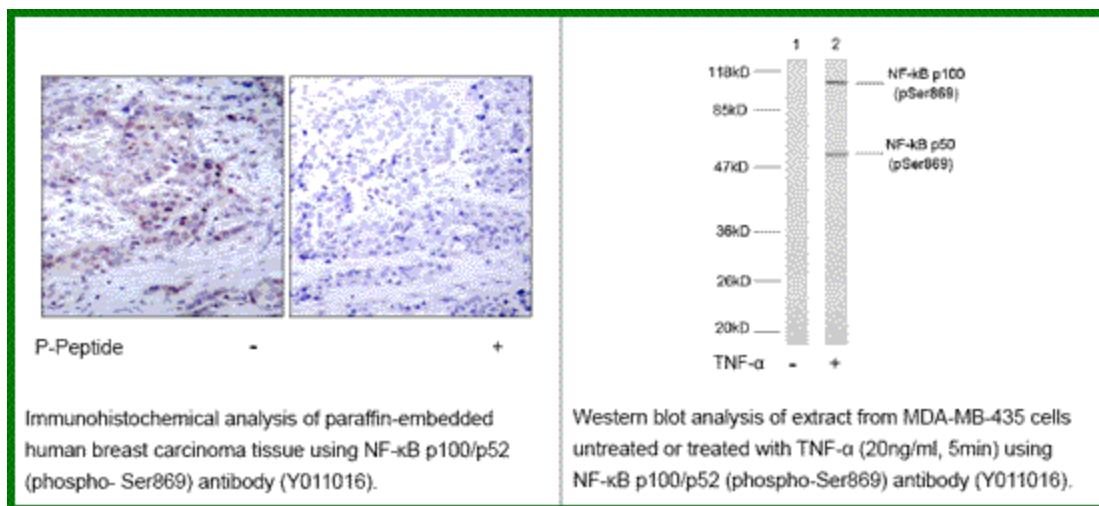
Storage buffer:

WB: 1:500~1:1000 IHC: 1:50~1:100

Form: Liquid

References

Qu Z, et al. (2004) J Biol Chem; 279(43): 44563-72. Xiao G, et al. (2001) J Biol Chem 7(2): 401-9.



For research use only

Antagene, Inc. Toll Free: 1-866-964-2589, Fax: 1-888-225-1868, info@antageneinc.com,
www.antageneinc.com