



## NF- $\kappa$ B p100/p52 (Phospho-Ser865) Antibody

**Cat. #:** ANTY011015

**Species:** Human, Mouse and Rat

**Quantity:** 100ug

**Concentration:** 100ug/100ul

**Storage and Stability:**

Store at -20°C/1 year

**Immunogen:**

The antiserum was produced against synthesized phosphopeptide derived from human NF- $\kappa$ B p100/p52 around the phosphorylation site of serine 865 (E-D-SP-A-Y).

**Specificity:** NF- $\kappa$ B p100/p52 (phospho-ser865) antibody detects endogenous levels of NF- $\kappa$ B p100/p52 only when phosphorylated at serine 865.

**Tested application:** WB and IHC

**Application Notes:** Rabbit IgG in phosphate buffered saline (without Mg<sup>2+</sup> and Ca<sup>2+</sup>), pH 7.4, 150mM NaCl, 0.02% sodium azide and 50% glycerol.

**Raised In:** Rabbit

**Purity:**

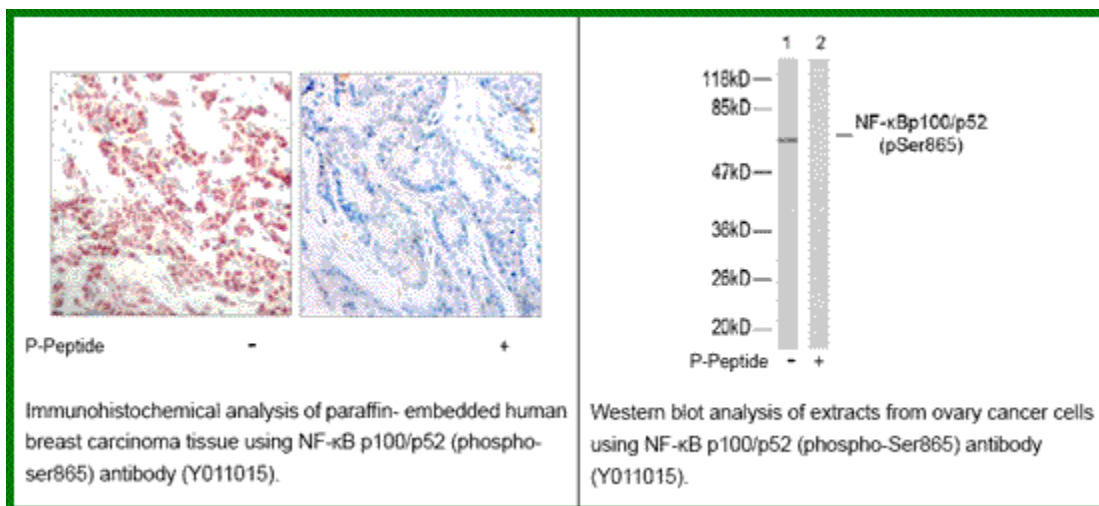
The antibody was affinity-purified from rabbit antiserum by affinity-chromatography using epitope-specific phosphopeptide. The antibody against non-phosphopeptide was removed by chromatography using non-phosphopeptide corresponding to the phosphorylation site.

**Storage buffer:** WB: 1:500~1:1000 IHC: 1:50~1:100

**Form:** Liquid

**References**

Qu Z, et al. (2004) J Biol Chem. 279(43): 44563-44572. Xiao G, et al. (2001) Mol Cell. 7(2): 401-409. Baeuerle P A, et al. (1994) Annu Rev Immunol. 12:141-179. Baeuerle P A, et al. (1996) Cell 87:13-20.



**For research use only**

Antagene, Inc. Toll Free: 1-866-964-2589, Fax: 1-888-225-1868, [info@antageneinc.com](mailto:info@antageneinc.com),  
[www.antageneinc.com](http://www.antageneinc.com)