



NF-κB p65 (Phospho-Ser536) Antibody

Cat. #: ANTY011014

Species: Human, Mouse and Rat

Quantity: 100ug

Concentration: 100ug/100ul

Storage and Stability:

Store at -20°C/1 year

Immunogen:

The antiserum was produced against synthesized phosphopeptide derived from human NF-κB p65 around the phosphorylation site of serine 536 (F-S-SP-I-A).

Specificity:

NF-κB p65 (phospho-Ser536) antibody detects endogenous levels of NF-κB p65 only when phosphorylated at serine 536.

Tested application: WB and IHC

Application Notes: Rabbit IgG in phosphate buffered saline (without Mg²⁺ and Ca²⁺), pH 7.4, 150mM NaCl, 0.02% sodium azide and 50% glycerol.

Raised In: Rabbit

Purity:

The antibody was affinity-purified from rabbit antiserum by affinity-chromatography using epitope-specific phosphopeptide. The antibody against non-phosphopeptide was removed by chromatography using non-phosphopeptide corresponding to the phosphorylation site.

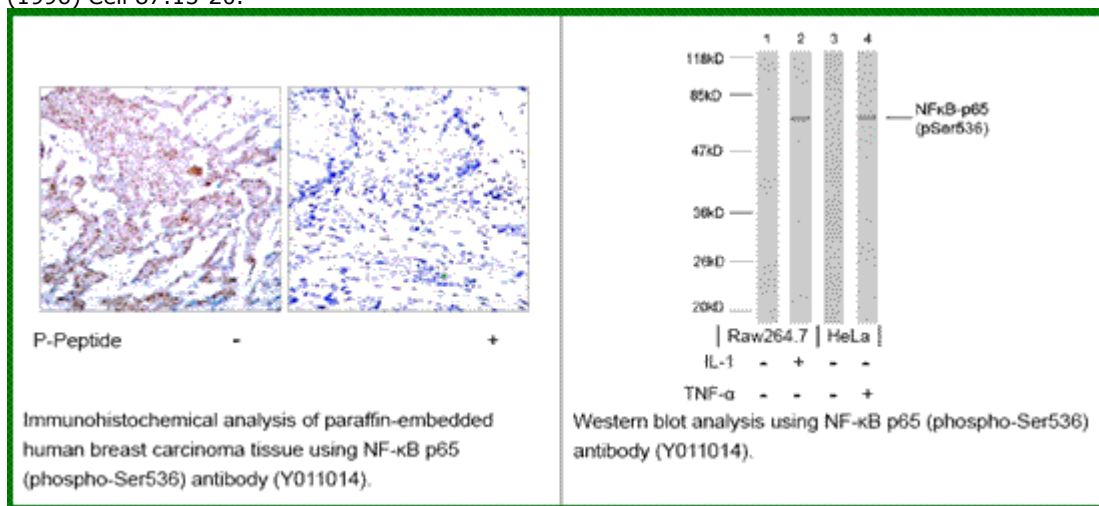
Storage buffer:

WB: 1:500~1:1000 IHC: 1:50~1:100

Form: Liquid

References:

Doyle S L, et al. (2005) J Biol Chem. 280(25): 23496-23501. Anwar K N, et al. (2004) J Immunol. 173(11): 6965-6972. Baeuerle P A, et al. (1994) Annu Rev Immunol. 12:141-179. Baeuerle P A, et al. (1996) Cell 87:13-20.



For research use only

Antagene, Inc. Toll Free: 1-866-964-2589, Fax: 1-888-225-1868, info@antageneinc.com,
www.antageneinc.com