



NF- κ B p65 (Phospho-Ser468) Antibody

Cat. #: ANTY011013

Species: Human, Mouse and Rat

Quantity: 100ug

Concentration: 100ug/100ul

Storage and Stability: Store at -20°C/1 year

Immunogen:

The antiserum was produced against synthesized phosphopeptide derived from human NF- κ B around the phosphorylation site of serine 468 (L-A-SP-V-D).

Specificity: NF- κ B p65 (phospho-Ser468) antibody detects endogenous levels of NF- κ B p65 only when phosphorylated at serine 468.

Tested application: WB

Application Notes: Rabbit IgG in phosphate buffered saline (without Mg²⁺ and Ca²⁺), pH 7.4, 150mM NaCl, 0.02% sodium azide and 50% glycerol.

Raised In: Rabbit

Purity:

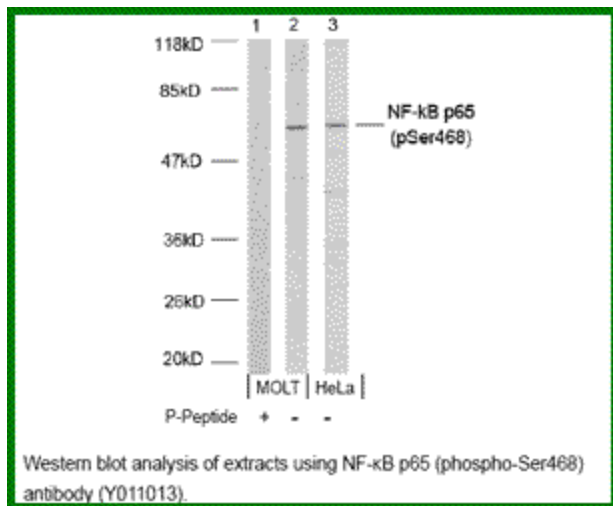
The antibody was affinity-purified from rabbit antiserum by affinity-chromatography using epitope-specific phosphopeptide. The antibody against non-phosphopeptide was removed by chromatography using non-phosphopeptide corresponding to the phosphorylation site.

Storage buffer: WB: 1:500~1:1000

Form: Liquid

References

Buss H, et al. (2004) J Biol Chem. Schmitz ML, et al. (2004) Blood.



For research use only

Antagene, Inc. Toll Free: 1-866-964-2589, Fax: 1-888-225-1868, info@antageneinc.com,
www.antageneinc.com