



## **NF-κB p65 (Phospho-Ser276) Antibody**

**Cat. #:** ANTY011011

**Species:** Human, Mouse and Rat

**Quantity:** 100ug

**Concentration:** 100ug/100ul

**Storage and Stability:**

Store at -20°C/1 year

**Immunogen:**

The antiserum was produced against synthesized phosphopeptide derived from human NF-κB p65 around the phosphorylation site of serine 276 (R-P-SP-D-R).

**Specificity:**

NF-κB p65 (phospho-Ser276) antibody detects endogenous levels of NF-κB p65 only when phosphorylated at serine 276.

**Tested application:** WB and IHC

**Application Notes:** Rabbit IgG in phosphate buffered saline (without Mg<sup>2+</sup> and Ca<sup>2+</sup>), pH 7.4, 150mM NaCl, 0.02% sodium azide and 50% glycerol.

**Raised In:** Rabbit

**Purity:**

The antibody was affinity-purified from rabbit antiserum by affinity-chromatography using epitope-specific phosphopeptide. The antibody against non-phosphopeptide was removed by chromatography using non-phosphopeptide corresponding to the phosphorylation site.

**Storage buffer:**

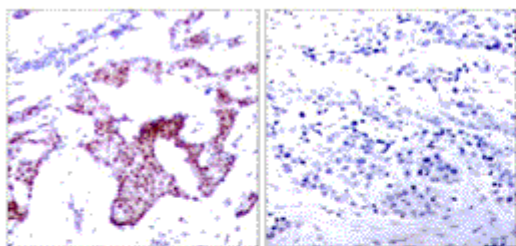
WB: 1:500~1:1000 IHC: 1:50~1:100

**Form:** Liquid

**References:** Baeuerle P A, et al. (1994) Annu Rev Immunol. 12:141-179. Baeuerle P A, et al. (1996) Cell 87:13-20. Haskill S, et al. (1991) Cell 65:1281-1289.

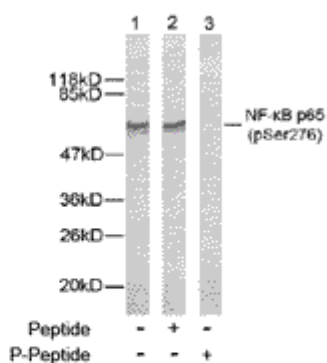
**For research use only**

Antagene, Inc. Toll Free: 1-866-964-2589, Fax: 1-888-225-1868, [info@antageneinc.com](mailto:info@antageneinc.com),  
[www.antageneinc.com](http://www.antageneinc.com)



P-Peptide                      -                      +

Immunohistochemical analysis of paraffin- embedded human breast carcinoma tissue using NF-κB p65 (phospho-Ser276) antibody (Y011011).



Western blot analysis of extract from HeLa cells using NF-κB p65 (phospho-Ser276) antibody (Y011011).

**For research use only**

Antagene, Inc. Toll Free: 1-866-964-2589, Fax: 1-888-225-1868, [info@antageneinc.com](mailto:info@antageneinc.com),  
[www.antageneinc.com](http://www.antageneinc.com)