



PTEN (Phospho-Ser380) Antibody

Cat. #: ANTY011009

Species: Human, Mouse and Rat

Quantity: 100ug

Concentration: 100ug/100ul

Storage and Stability:

Store at -20°C/1 year

Immunogen:

The antiserum was produced against synthesized phosphopeptide derived from human PTEN around the phosphorylation site of serine 380 (R-Y-SP-D-T).

Specificity:

PTEN (phospho-Ser380) antibody detects endogenous levels of PTEN only when phosphorylated at serine 380.

Tested application: IHC

Application Notes: Rabbit IgG in phosphate buffered saline (without Mg²⁺ and Ca²⁺), pH 7.4, 150mM NaCl, 0.02% sodium azide and 50% glycerol.

Raised In: Rabbit

Purity:

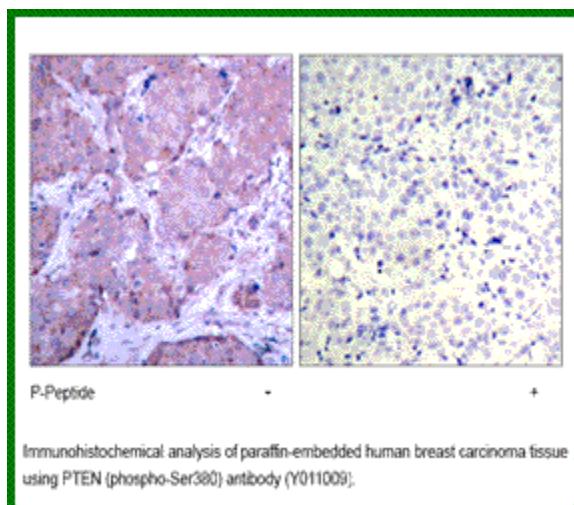
The antibody was affinity-purified from rabbit antiserum by affinity-chromatography using epitope-specific phosphopeptide. The antibody against non-phosphopeptide was removed by chromatography using non-phosphopeptide corresponding to the phosphorylation site.

Storage buffer: IHC: 1:50~1:100

Form: Liquid

References

Al-Khoury AM, et al. (2005). J Biol Chem.280(42):35195-35202. Torres J, et al. (2001). J Biol Chem.276(2): 993-998. Vazquez F, et al. (2000). Mol Cell Biol.20(14): 5010-5018.



For research use only

Antagene, Inc. Toll Free: 1-866-964-2589, Fax: 1-888-225-1868, info@antageneinc.com,
www.antageneinc.com