



GSK3α (Phospho-Ser21) Antibody

Cat. #: ANTY011007

Species: Human, Mouse and Rat

Quantity: 100ug

Concentration: 100ug/100ul

Storage and Stability: Store at -20°C/1 year

Immunogen: The antiserum was produced against synthesized phosphopeptide derived from human GSK3α around the phosphorylation site of serine 21 (T-S-SP-F-A).

Specificity: GSK3α (phospho-Ser21) antibody detects endogenous levels of GSK3α only when phosphorylated at serine 21.

Tested application: WB and IHC

Application Notes: Rabbit IgG in phosphate buffered saline (without Mg²⁺ and Ca²⁺), pH 7.4, 150mM NaCl, 0.02% sodium azide and 50% glycerol.

Raised In: Rabbit

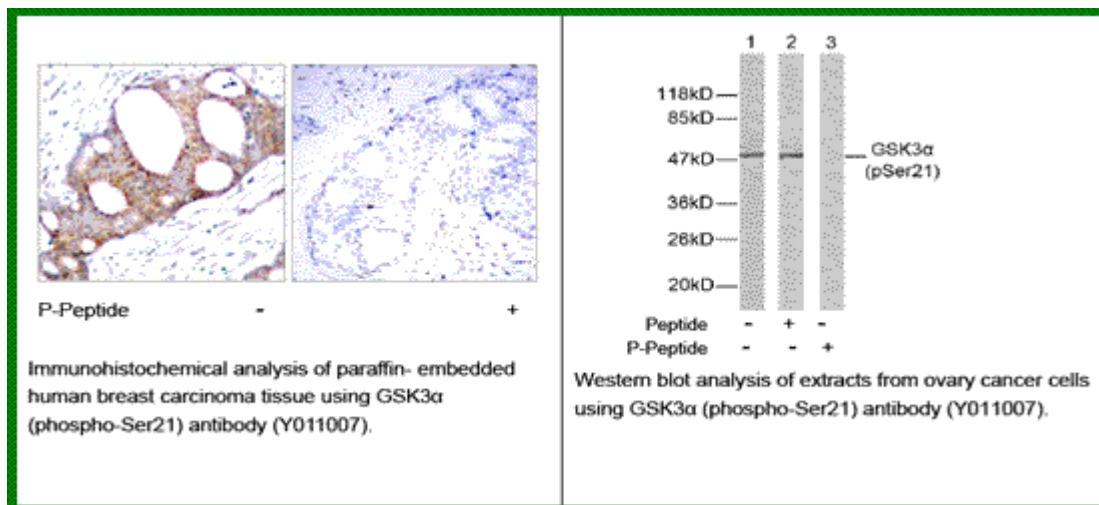
Purity: The antibody was affinity-purified from rabbit antiserum by affinity-chromatography using epitope-specific phosphopeptide. The antibody against non-phosphopeptide was removed by chromatography using non-phosphopeptide corresponding to the phosphorylation site.

Storage buffer: WB: 1:500~1:1000 IHC: 1:50~1:100

Form: Liquid

References

Barry FA, et al. (2003) FEBS Lett. 553(1-2): 173-178. Koivisto L, et al. (2003) J Cell Sci. 116(Pt 18): 3749-3760. Welsh G I, et al. (1996) Trends Cell Biol. 6:274-279. Srivastava A K, et al. (1998) Mol. Cell. Biochem. 182: 135-141.



For research use only

Antagene, Inc. Toll Free: 1-866-964-2589, Fax: 1-888-225-1868, info@antageneinc.com,
www.antageneinc.com