



## Raf1 (Phospho-Ser259) Antibody

**Cat. #:** ANTY011006

**Species:** Human, Mouse and Rat

**Quantity:** 100ug

**Concentration :** 100ug/100ul

**Storage and Stability:** Store at -20°C/1 year

**Immunogen:** The antiserum was produced against synthesized phosphopeptide derived from human Raf-1 around the phosphorylation site of serine 259 (S-T-SP-T-P).

**Specificity:** Raf-1 (phospho-Ser259) antibody detects endogenous levels of Raf-1 only when phosphorylated at serine 259.

**Tested Application:** WB and IHC

### Application Notes:

Rabbit IgG in phosphate buffered saline (without Mg<sup>2+</sup> and Ca<sup>2+</sup>), pH 7.4, 150mM NaCl, 0.02% sodium azide and 50% glycerol.

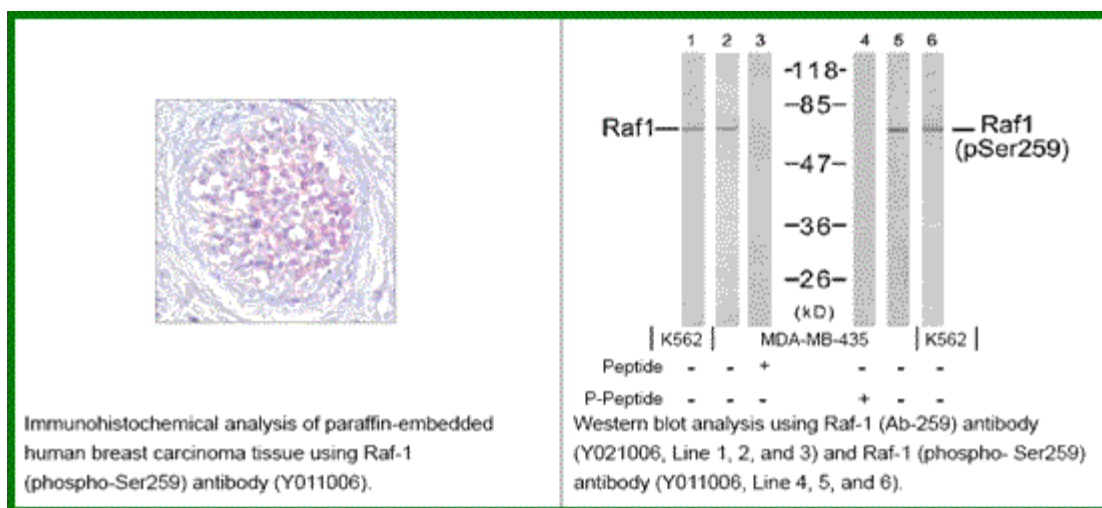
**Raised In:** Rabbit

**Purity:** The antibody was affinity-purified from rabbit antiserum by affinity-chromatography using epitope-specific phosphopeptide. The antibody against non-phosphopeptide was removed by chromatography using non-phosphopeptide corresponding to the phosphorylation site.

**Storage buffer:** WB: 1:500~1:1000 IHC: 1:50~1:100

**Form:** Liquid

**Reference :** Dougherty M K, et al. (2005) Mol Cell. 17(2): 215-224. Hekman M, et al. (2005) FEBS Lett. 579(2): 464-468. Avruch J, et al. (1994) Trends Biochem. Sci. 19, 279-283. Chong H, et al. (2001) EMBO J. 20, 3716-3727. King A J, et al. (1998) Nature. 396:180-183.



**For research use only**

Antagene, Inc. Toll Free: 1-866-964-2589, Fax: 1-888-225-1868, [info@antageneinc.com](mailto:info@antageneinc.com),  
[www.antageneinc.com](http://www.antageneinc.com)