



## PDK1 (Phospho-Ser241) Antibody

**Cat. #:** ANTY011005

**Species :** Human, Mouse and Rat

**Quantity :** 100ug

**Concentration :** 100ug/100ul

**Storage and Stability:** Store at -20°C/1 year

**Immunogen:** The antiserum was produced against synthesized phosphopeptide derived from human PDK1 around the phosphorylation site of serine 241 (A-N-SP-F-V).

**Specificity:** PDK1 (phospho-Ser241) antibody detects endogenous levels of PDK1 only when phosphorylated at serine 241.

**Tested Application:** WB and IHC

**Application Notes:** Rabbit IgG in phosphate buffered saline (without Mg<sup>2+</sup> and Ca<sup>2+</sup>), pH 7.4, 150mM NaCl, 0.02% sodium azide and 50% glycerol.

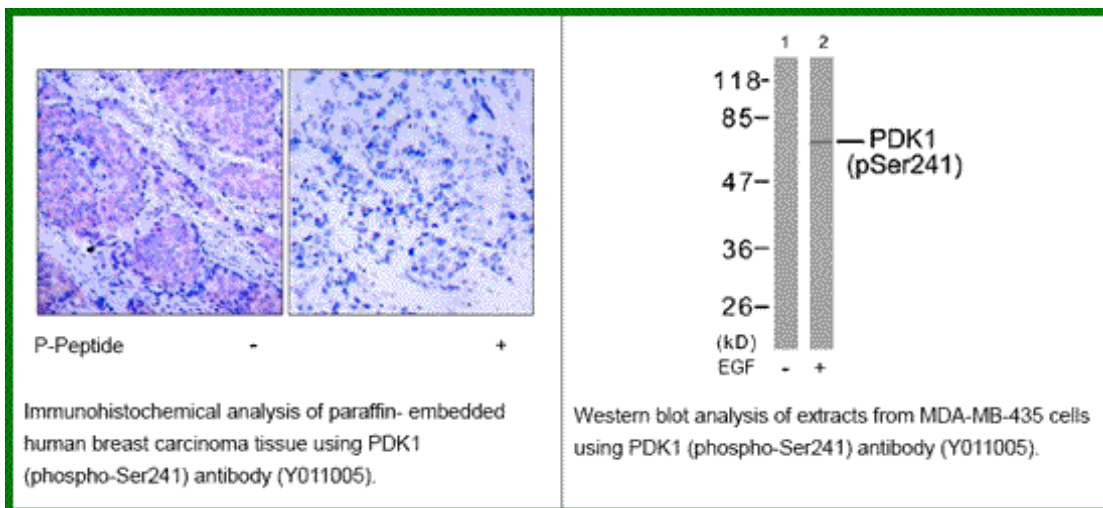
**Raised In:** Rabbit

**Purity:** The antibody was affinity-purified from rabbit antiserum by affinity-chromatography using epitope-specific phosphopeptide. The antibody against non-phosphopeptide was removed by chromatography using non-phosphopeptide corresponding to the phosphorylation site.

**Storage buffer:** WB: 1:500~1:1000 IHC: 1:50~1:100

**Form:** Liquid

**Reference :** Scheid MP, et al. (2005) Mol Cell Biol; 25(6): 2347-63 Chen H, et al. (2001) Biochemistry; 40(39): 11851-9 Sato S, et al. (2002) J Biol Chem; 277(42): 39360-7 Lim MA, et al. (2003) Proc Natl Acad Sci U S A; 100(24): 14006-11



**For research use only**

Antagene, Inc. Toll Free: 1-866-964-2589, Fax: 1-888-225-1868, [info@antageneinc.com](mailto:info@antageneinc.com),  
[www.antageneinc.com](http://www.antageneinc.com)