



Elk-1 (Phospho-Ser383) Antibody

Cat. # ANTY011004

Species : Human, Mouse and Rat

Quantity : 100ug

Concentration : 100ug/100ul

Storage and Stability: Store at -20°C/1 year

Immunogen:

The antiserum was produced against synthesized phosphopeptide derived from human Elk-1 around the phosphorylation site of serine 383 (T-L-SP-P-I).

Specificity:

Elk-1 (phospho-Ser383) antibody detects endogenous levels of Elk-1 only when phosphorylated at serine 383.

Tested Application: WB and IHC

Application Notes:

Rabbit IgG in phosphate buffered saline (without Mg²⁺ and Ca²⁺), pH 7.4, 150mM NaCl, 0.02% sodium azide and 50% glycerol.

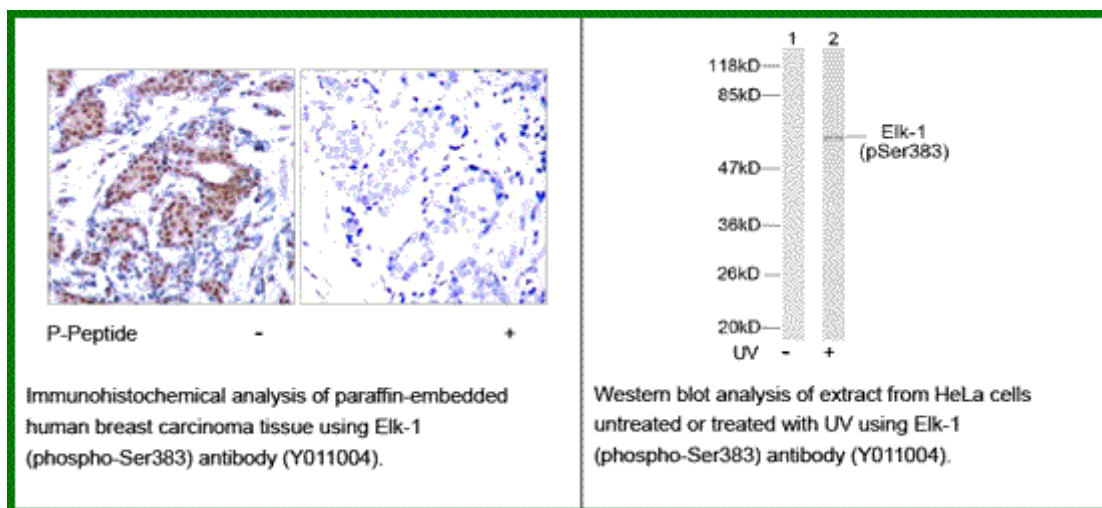
Raised In: Rabbit

Purity: The antibody was affinity-purified from rabbit antiserum by affinity-chromatography using epitope-specific phosphopeptide. The antibody against non-phosphopeptide was removed by chromatography using non-phosphopeptide corresponding to the phosphorylation site.

Storage buffer: WB: 1:500~1:1000 IHC: 1:50~1:100

Form: Liquid

Reference : Xing J, et al. (1996) Science. 273(5277): 959-963. Janknecht R, et al. (1993) EMBO J. 12(13): 5097-5104. Marais R, et al. (1993) Cell 73: 381-393. Kortgenjann M, et al. (1994) Mol Cell Biol. 14: 4815-4824. Cavigelli M, et al. (1995) EMBO J. 14: 5957-5964.



For research use only

Antagene, Inc. Toll Free: 1-866-964-2589, Fax: 1-888-225-1868, info@antageneinc.com,
www.antageneinc.com