



c-Jun (Phospho-Ser73) Antibody

Cat. #:ANTY011003

Species: Human, Mouse and Rat

Quantity: 100ug

Concentration: 100ug/100ul

Storage and Stability: Store at -20°C/1 year

Immunogen:

The antiserum was produced against synthesized phosphopeptide derived from human c-Jun around the phosphorylation site of serine 73 (L-A-SP-P-E).

Specificity:

c-Jun (phospho-Ser73) antibody detects endogenous levels of c-Jun only when phosphorylated at serine 73.

Tested Application: WB and IHC

Application Notes:

Rabbit IgG in phosphate buffered saline (without Mg²⁺ and Ca²⁺), pH 7.4, 150mM NaCl, 0.02% sodium azide and 50% glycerol.

Raised In: Rabbit

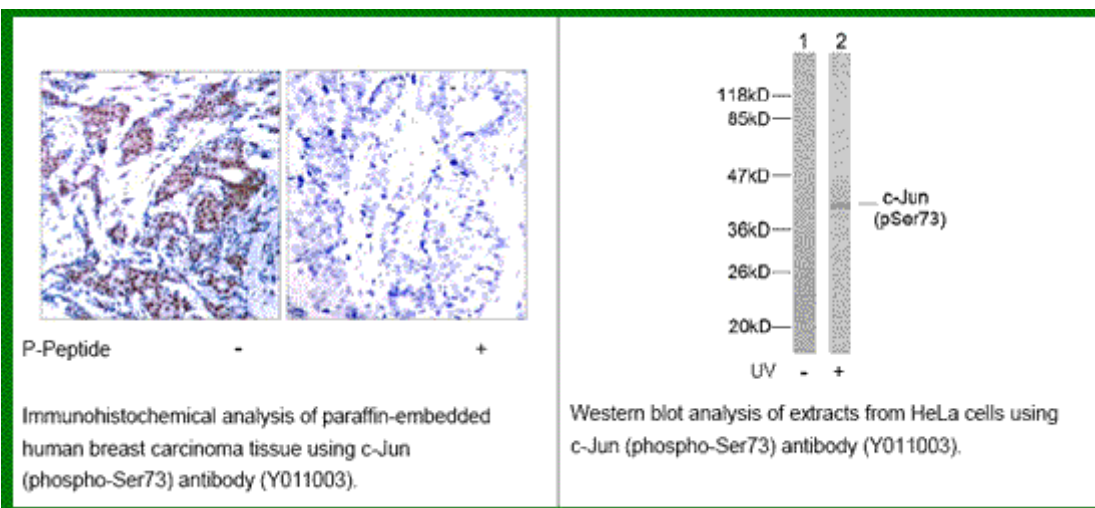
Purity:

The antibody was affinity-purified from rabbit antiserum by affinity-chromatography using epitope-specific phosphopeptide. The antibody against non-phosphopeptide was removed by chromatography using non-phosphopeptide corresponding to the phosphorylation site.

Storage buffer: WB: 1:500~1:1000 IHC: 1:50~1:100

Form: Liquid

Reference : Sevilla A, et al. (2004) Oncogene.23 (55): 8950-8958. Beausoleil S A, et al. (2004) Proc Natl Acad Sci U S A. 101(33): 12130-12135. Binetruy B, et al. (1991) Nature. 351:122-127. Smeal T, et al. (1991) Nature. 354: 494-496. Derijard B, et al. (1994) Cell. 76:1025-1037.



For research use only

Antagene, Inc. Toll Free: 1-866-964-2589, Fax: 1-888-225-1868, info@antageneinc.com,
www.antageneinc.com