



c-Jun (Phospho-Ser63) Antibody

Cat. #: ANTY011001

Species: Human and Mouse

Quantity: 100ug

Concentration: 100ug/100ul

Storage and Stability: Store at -20°C/1 year

Immunogen:

The antiserum was produced against synthesized phosphopeptide derived from human c-Jun around the phosphorylation site of serine 63 (L-T-SP-P-D).

Specificity:

c-Jun (phospho-Ser63) antibody detects endogenous levels of c-Jun only when phosphorylated at serine 63.

Tested Application: WB and IHC

Application Notes:

Rabbit IgG in phosphate buffered saline (without Mg²⁺ and Ca²⁺), pH 7.4, 150mM NaCl, 0.02% sodium azide and 50% glycerol.

Raised In:

Rabbit

Purity:

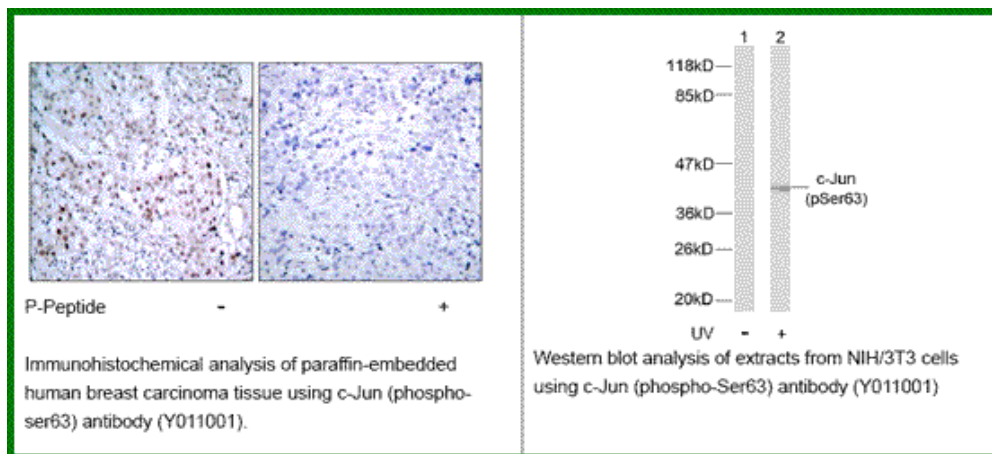
The antibody was affinity-purified from rabbit antiserum by affinity-chromatography using epitope-specific phosphopeptide. The antibody against non-phosphopeptide was removed by chromatography using non-phosphopeptide corresponding to the phosphorylation site.

Storage buffer: WB: 1:500~1:1000 IHC: 1:50~1:100

Form: Liquid

References

Wei W, et al. (2005). Cancer Cell. 8(1): 25-33. Sevilla A, et al. (2004). Oncogene.23 (55): 8950-8958. Li L, et al. (2004). J Biol Chem.279 (6): 4058-4065. Hurd C, et al. (2002). Oncogene.21 (14): 2154-2160.



For research use only

Antagene, Inc. Toll Free: 1-866-964-2589, Fax: 1-888-225-1868, info@antageneinc.com,
www.antageneinc.com