



SIX2 (ANT0080R) Rabbit mAb

CatalogNo: ANT8392 **Recombinant** 

Formulation: PBS,50%glycerol,0.05%Proclin 300,0.05%BSA

Quantity : 100 ug/vial

Host Species

- Rabbit
- Human,Mouse,Rat,

Reactivity

- WB,IF,IP,ELISA

Applications

MW

- 32kD (Calculated)
- 38kD (Observed)
- IgG,Kappa

Isotype

Recommended Dilution Ratios

WB 1:2000-1:10000

IF 1:200-1:1000

ELISA 1:5000-1:20000

IP 1:50-1:200

Storage

Storage* -15°C to -25°C/1 year(Do not lower than -25°C)

Basic Information

Clonality Monoclonal

Clone Number ANT0080R

Immunogen Information

Specificity Endogenous

Target Information

Gene name SIX2

Protein Name Homeobox protein SIX2

Organism

Gene ID

UniProt ID

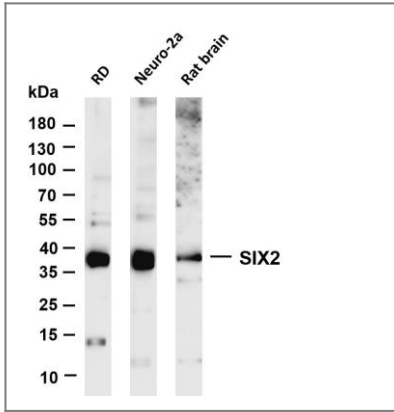
Human	10736;	Q9NPC8;
Mouse	20472;	Q62232;

Cellular Localization Nucleus

Tissue specificity Strongly expressed in skeletal muscle. Expressed in Wilms' tumor and in the cap mesenchyme of fetal kidney (at protein level).

Function Function:May be involved in limb tendon and ligament development.,similarity:Belongs to the SIX/Sine oculis homeobox family.,similarity:Contains 1 homeobox DNA-binding domain.,tissue specificity:Strongly expressed in skeletal muscle.,

Validation Data



Various whole cell lysates were separated by 4-20% SDS-PAGE, and the membrane was blotted with anti-SIX2 (ANT0080R) antibody. The HRPconjugated Goat anti-Rabbit IgG(H + L) antibody was used to detect the antibody. Lane 1: RD Lane 2: Neuro-2a Lane 3: Rat brain Predicted band size: 32kDa Observed band size: 38kDa

For Research use only, not for diagnostics and clinical use

Contact Antagene Inc Tel 1-866-964-2589 Email: info@antageneinc.com