



Mouse Monoclonal Antibody **SIX2** conjugated to Sepharose Beads

CatalogNo: **ANT8392-S**

Size 200ul

Storage Store at 4 °C for frequent use

### Description

This Antagene antibody is immobilized via covalent binding of primary amino groups to N-hydroxysuccinimide (NHS)-activated sepharose beads. It is useful for immunoprecipitation assays.

**SIX2 (ANT0080R) Rabbit mAb**

Formulation: 50% slurry in PBS pH 7.2 with 0.01mg NaN<sub>3</sub> preservative.

#### Host Species

- Rabbit
- Human, Mouse, Rat,

#### Reactivity

- WB, IF, IP, ELISA

#### Applications

#### MW

- 32kD (Calculated)
- 38kD (Observed)

#### Isotype

- IgG, Kappa

## Recommended Dilution Ratios

IP

### Basic Information

**Clonality** Monoclonal

**Clone Number** ANT0080R

### Immunogen Information

**Specificity** Endogenous

# Target Information

Gene name SIX2

Protein Name Homeobox protein SIX2

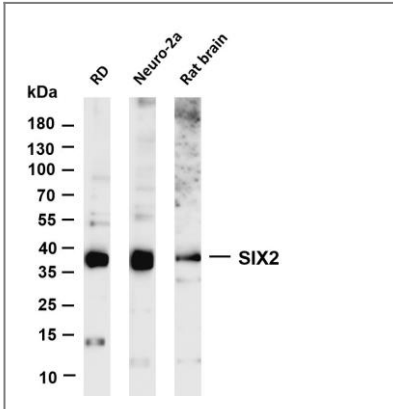
Organism	Gene ID	UniProt ID
Human	<a href="#">10736;</a>	<a href="#">Q9NPC8;</a>
Mouse	<a href="#">20472;</a>	<a href="#">Q62232;</a>

Cellular Localization Nucleus

Tissue specificity Strongly expressed in skeletal muscle. Expressed in Wilms' tumor and in the cap mesenchyme of fetal kidney (at protein level).

Function Function:May be involved in limb tendon and ligament development.,similarity:Belongs to the SIX/Sine oculis homeobox family.,similarity:Contains 1 homeobox DNA-binding domain.,tissue specificity:Strongly expressed in skeletal muscle.,

# Validation Data



Various whole cell lysates were separated by 4-20% SDS-PAGE, and the membrane was blotted with anti-SIX2 (ANT0080R) antibody. The HRPconjugated Goat anti-Rabbit IgG(H + L) antibody was used to detect the antibody. Lane 1: RD Lane 2: Neuro-2a Lane 3: Rat brain Predicted band size: 32kDa Observed band size: 38kDa

For Research use only, not for diagnostics and clinical use

Contact Antagene Inc Tel 1-866-964-2589 Email: [info@antageneinc.com](mailto:info@antageneinc.com)