



Mouse Monoclonal Antibody **SIX2** conjugated to Sepharose Beads

CatalogNo: **ANT8392-M**

Size 200ul

Storage Store at 4 °C for frequent use

Description

This Antagene antibody is immobilized by the covalent reaction of hydrazinonicotinamide-modified antibody with formylbenzamide-modified beads. It is useful for immunoprecipitation.

SIX2 (ANT0080R) Rabbit mAb

Formulation: Each vial contains 1mg/ml Magnetic Bead in PBS, pH 7.2, 0.05mg ANaN3.

Host Species

- Rabbit
- Human, Mouse, Rat,

Reactivity

- WB, IF, IP, ELISA

Applications

MW

- 32kD (Calculated)
- 38kD (Observed)

Isotype

- IgG, Kappa

Recommended Dilution Ratios

IP

Basic Information

Clonality	Monoclonal
Clone Number	ANT0080R

Immunogen Information

Specificity Endogenous

Target Information

Gene name SIX2

Protein Name Homeobox protein SIX2

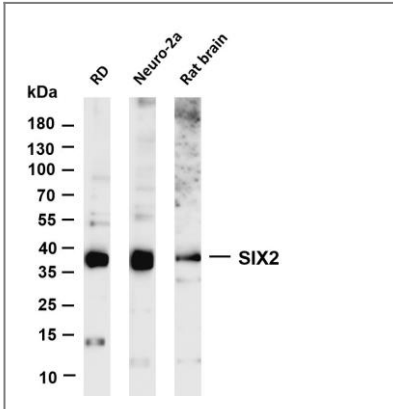
Organism	Gene ID	UniProt ID
Human	10736;	Q9NPC8;
Mouse	20472;	Q62232;

Cellular Localization Nucleus

Tissue specificity Strongly expressed in skeletal muscle. Expressed in Wilms' tumor and in the cap mesenchyme of fetal kidney (at protein level).

Function Function:May be involved in limb tendon and ligament development.,similarity:Belongs to the SIX/Sine oculis homeobox family.,similarity:Contains 1 homeobox DNA-binding domain.,tissue specificity:Strongly expressed in skeletal muscle.,

Validation Data



Various whole cell lysates were separated by 4-20% SDS-PAGE, and the membrane was blotted with anti-SIX2 (ANT0080R) antibody. The HRPconjugated Goat anti-Rabbit IgG(H + L) antibody was used to detect the antibody. Lane 1: RD Lane 2: Neuro-2a Lane 3: Rat brain Predicted band size: 32kDa Observed band size: 38kDa

For Research use only, not for diagnostics and clinical use

Contact Antagene Inc Tel 1-866-964-2589 Email: info@antageneinc.com