

## MEK3 (ANT0062R) Rabbit mAb

CatalogNo: ANT8378 **Recombinant** 

Formulation: PBS,50%glycerol,0.05%Proclin 300,0.05%BSA  
Quantity : 100 ug/vial

### Host Species

- Rabbit
- Human,Mouse,Rat,

### Reactivity

- WB,IHC,IF,IP,ELISA

### Applications

### MW

- 39kD (Calculated)
- 39kD (Observed)

### Isotype

- IgG,Kappa

## Recommended Dilution Ratios

IHC 1:200-1:1000

WB 1:2000-1:10000

IF 1:200-1:1000

ELISA 1:5000-1:20000

IP 1:50-1:200

## Storage

**Storage\*** -15°C to -25°C/1 year(Do not lower than -25°C)

## Basic Information

**Clonality** Monoclonal

**Clone Number** ANT0062R

## Immunogen Information Specificity

Endogenous

## Target Information

Gene name MAP2K3

Protein Name Dual specificity mitogen-activated protein kinase kinase 3

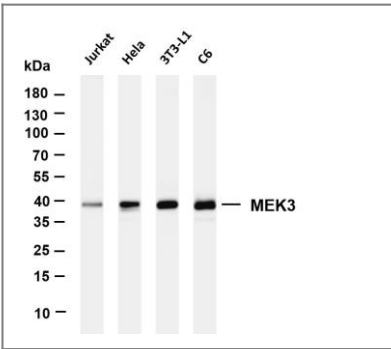
Organism	Gene ID	UniProt ID
Human	<a href="#">5606</a> ;	<a href="#">P46734</a> ;
Mouse	<a href="#">26397</a> ;	<a href="#">O09110</a> ;

Cellular Localization Cytoplasm, Nucleus

Tissue specificity Abundant expression is seen in the skeletal muscle. It is also widely expressed in other tissues.

Function Catalytic activity:ATP + a protein = ADP + a phosphoprotein.,disease:Defects in MAP2K3 may be involved in colon cancer.,enzyme regulation:Activated by dual phosphorylation on Ser-218 and Thr-222.,Function:Dual specificity kinase. Is activated by cytokines and environmental stress in vivo. Catalyzes the concomitant phosphorylation of a threonine and a tyrosine residue in the MAP kinase p38.,ANTM:Autophosphorylated.,PTM:Phosphorylation on Ser-218 and Thr-222 by MAP kinase kinase kinases regulates positively the kinase activity.,PTM:Yersinia yopJ may acetylate Ser/Thr residues, preventing phosphorylation and activation, thus blocking the MAPK signaling pathway.,similarity:Belongs to the protein kinase superfamily.,similarity:Belongs to the protein kinase superfamily. STE Ser/Thr protein kinase family. MAP kinase kinase subfamily.,similarity:Contains 1 protein kinase domain.,subunit:Binds to DYRK1B/MIRK and increases its kinase activity. Part of a complex with MAP3K3, RAC1 and CCM2. Interacts with Yersinia yopJ.,tissue specificity:Abundant expression is seen in the skeletal muscle. It is also widely expressed in other tissues.,

## Validation Data



Various whole cell lysates were separated by 4-20% SDS-PAGE, and the membrane was blotted with anti-MEK3 (ANT0062R) antibody. The HRPconjugated Goat anti-Rabbit IgG(H + L) antibody was used to detect the antibody. Lane 1: Jurkat Lane 2: HeLa Lane 3: 3T3-L1 Lane 4: C6 Predicted band size: 39kDa Observed band size: 39kDa

For Research use only, not for diagnostics and clinical use  
Contact Antagene Inc Tel 1-866-964-2589 Email: [info@antageneinc.com](mailto:info@antageneinc.com)