



Mouse Monoclonal Antibody **Albumin** conjugated to Sepharose Beads

CatalogNo: **ANT8377-S**

Size 200ul

Storage Store at 4 °C for frequent use

### Description

This Antagene antibody is immobilized via covalent binding of primary amino groups to N-hydroxysuccinimide (NHS)-activated sepharose beads. It is useful for immunoprecipitation assays.

**Albumin (ANT0061R) Rabbit mAb**

Formulation: 50% slurry in PBS pH 7.2 with 0.01mg NaN<sub>3</sub> preservative.

#### Host Species

- Rabbit
- Human, Mouse, Rat,

#### Reactivity

- WB, IHC, IF, IP, ELISA

#### Applications

#### MW

- 69kD (Calculated)
  - IgG, Kappa
- 69kD (Observed)

#### Isotype

## Recommended Dilution Ratios

### IP

### Basic Information

Clonality	Monoclonal
-----------	------------

Clone Number	ANT0061R
--------------	----------

# Immunogen Information

**Specificity** Endogenous

**Gene name** ALB

**Protein Name** Serum albumin

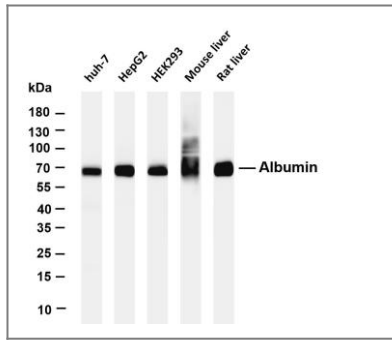
Organism	Gene ID	UniProt ID
Human	<a href="#">213;</a>	<a href="#">P02768;</a>
Mouse		<a href="#">P07724;</a>

**Cellular Localization** Secreted

**Tissue specificity** Plasma.

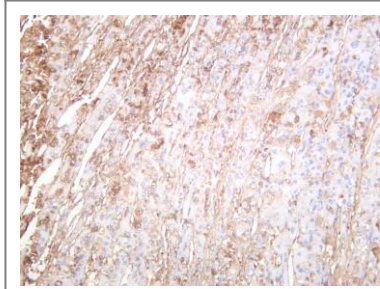
**Function** Caution:A peptide arising from positions 166 to 174 was originally (PubMed:3087352 and PubMed:2437111) termed neurotensin-related peptide (NRP) or kinetensin and was thought to regulates fat digestion, lipid absorption, and blood flow.,disease:A variant structure of albumin could lead to increased binding of zinc resulting in an asymptomatic augmentation of zinc concentration in the blood [MIM:194470].,disease:Defects in ALB are a cause of familial dysalbuminemic hyperthyroxinemia (FDH) [MIM:103600]. FDH is a form of euthyroid hyperthyroxinemia that is due to increased affinity of ALB for T(4). It is the most common cause of inherited euthyroid hyperthyroxinemia in Caucasian population.,Function:Serum albumin, the main protein of plasma, has a good binding capacity for water, Ca(2+), Na(+), K(+), fatty acids, hormones, bilirubin and drugs. Its main function is the regulation of the colloidal osmotic pressure of blood.,miscellaneous:Acetylated on Lys-223 by acetylsalicylic acid.,online information:Serum albumin entry,polymorphism:The sequence shown is that of variant albumin A.,ANTM:Glycated in diabetic patients.,PTM:Kenitra variant is partially Oglycosylated at Thr-620. It has two new disulfide bonds Cys-600 to Cys-602 and Cys-601 to Cys-606.,similarity:Belongs to the ALB/AFP/VDB family.,similarity:Contains 3 albumin domains.,tissue specificity:Plasma.,

## Validation Data

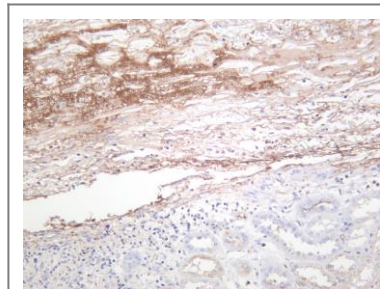


Various whole cell lysates were separated by 4-20% SDS-PAGE, and the membrane was blotted with anti-Albumin (ANT0061R) antibody. The HRPconjugated Goat anti-Rabbit IgG(H + L) antibody was used to detect the antibody. Lane 1: huh-7 Lane 2: HepG2 Lane 3: HEK293 Lane 4: Mouse liver

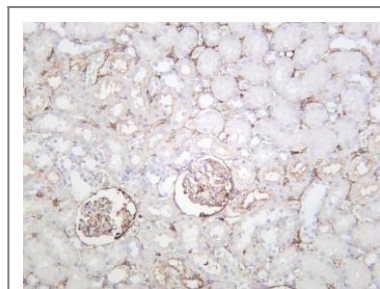
Lane 5: Rat liver Predicted band size: 69kDa Observed band size: 69kDa



Human hepatocellular carcinoma was stained with anti-Albumin (ANT0061R) rabbit antibody



Human kidney was stained with anti-Albumin (ANT0061R) rabbit antibody



Rat kidney was stained with anti-Albumin (ANT0061R) rabbit antibody

For Research use only, not for diagnostics and clinical use  
Contact Antagene Inc Tel 1-866-964-2589 Email: [info@antageneinc.com](mailto:info@antageneinc.com)